



Permission Manager 1.0
Installation Guide

Copyright

Copyright ©2008-2012 SharePointBoost Co., Ltd. All rights reserved.

All materials contained in this publication are protected by Copyright Law and no part of this publication may be reproduced, modified, displayed, stored in a retrieval system, or transmitted in any form or by any means, electronic, mechanical, photocopying, recording or otherwise, without the prior written consent of SharePointBoost.

Our web site: <http://SharePointBoost.com/>

Contents

1. Overview	1
2. System Requirements	1
2.1 Operation System	1
2.2 SQL Server	1
2.3 SharePoint Versions	1
2.4 Browser Clients	1
2.5 Softwares	1
2.6 Service Account Requirements	1
3. Installation Instructions	2
3.1 Download Permission Manager	2
3.2 Install Prerequisites	2
3.3 Install Permission Core	8
3.4 Install Column/View Permission	16
3.5 Install Column View Permission for Web Service	24
4. Access Permission Manager	28
5. Repair Instructions	28
5.1 Repair Prerequisites	28
5.2 Repair Permission Core	29
5.3 Repair Column/View Permission	31
5.4 Repair Column/View Permission for Web Service	32
6. Uninstallation Instructions	33
6.1 Uninstall Prerequisites	33
6.2 Uninstall Permission Core	34
6.1 Uninstall Column/View Permission	36
6.1 Uninstall Column/View Permission for Web Service	37
7. Support	37
7.1 Troubleshooting FAQ	37
7.2 Contact Info	37

1. Overview

Permission Manager can help administrators manage SharePoint permissions on the central platform.

This guide is intended to walk you through the process of installing Permission Manager on your SharePoint server farm.

2. System Requirements

2.1 Operation System

- Windows Server 2008 (x86 and x64)
- Windows Server 2008 R2 (x86 and x64)

2.2 SQL Server

- SQL Server 2008 (x86 and x64)

2.3 SharePoint Versions

Permission Manager can run on the following versions of Microsoft SharePoint:

- Microsoft SharePoint Server 2010
- Microsoft SharePoint Foundation 2010

2.4 Browser Clients

Permission Manager can run on following browsers:

- Microsoft Internet Explorer 8.x and above
- Chrome
- Firefox

2.5 Softwares

- .Net Framework 3.5

2.6 Service Account Requirements

When you install SharePointBoost Permission Manager, the account that you use must have specific permissions and rights. If the account that you use does not have the required permissions, the installation will fail.

The account that you use when you install must have the following permissions:

- Domain user account.
- Member of the **Administrators** group in domain.
- Member of the **Domain Admins** group.
- Member of the **Farm Administrators** group.

3. Installation Instructions

3.1 Download Permission Manager

Please skip this step if you already download the product or have been provided with a copy of Permission Manager.

1. Access the product site at <http://www.sharepointboost.com>
2. Download it to your SharePoint server.

To install the product, the current user must be met [these requirements](#).

The installation should be run on server which is running Microsoft SharePoint Foundation Web Application services.

Permission Manager contains four components:

Prerequisites: The prerequisites must be installed before the permission core components.

Permission Core: This is the component that is required for the Permission Manager to work.

Column/View Permission: This is the component that is required for the Permission Manager to manage column and view permission settings.

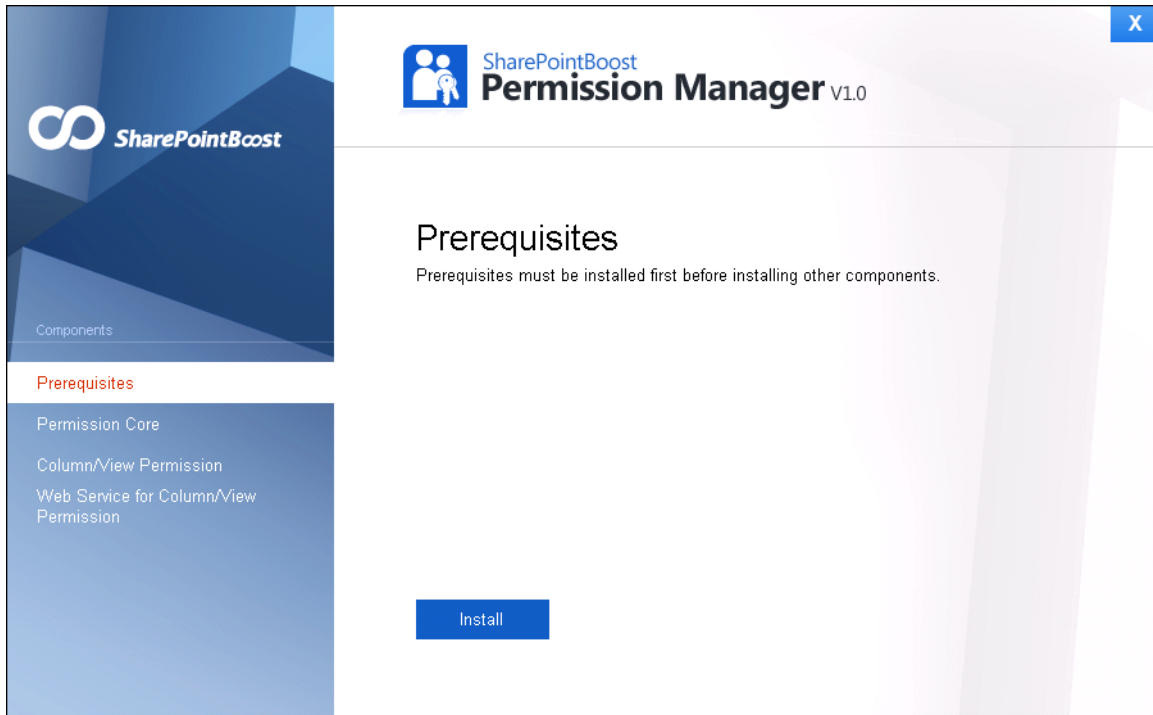
Column/View Permission for Web Services: This component need to installed for managing column and view permissions on the web services.

The followings show the steps to install all above four components.

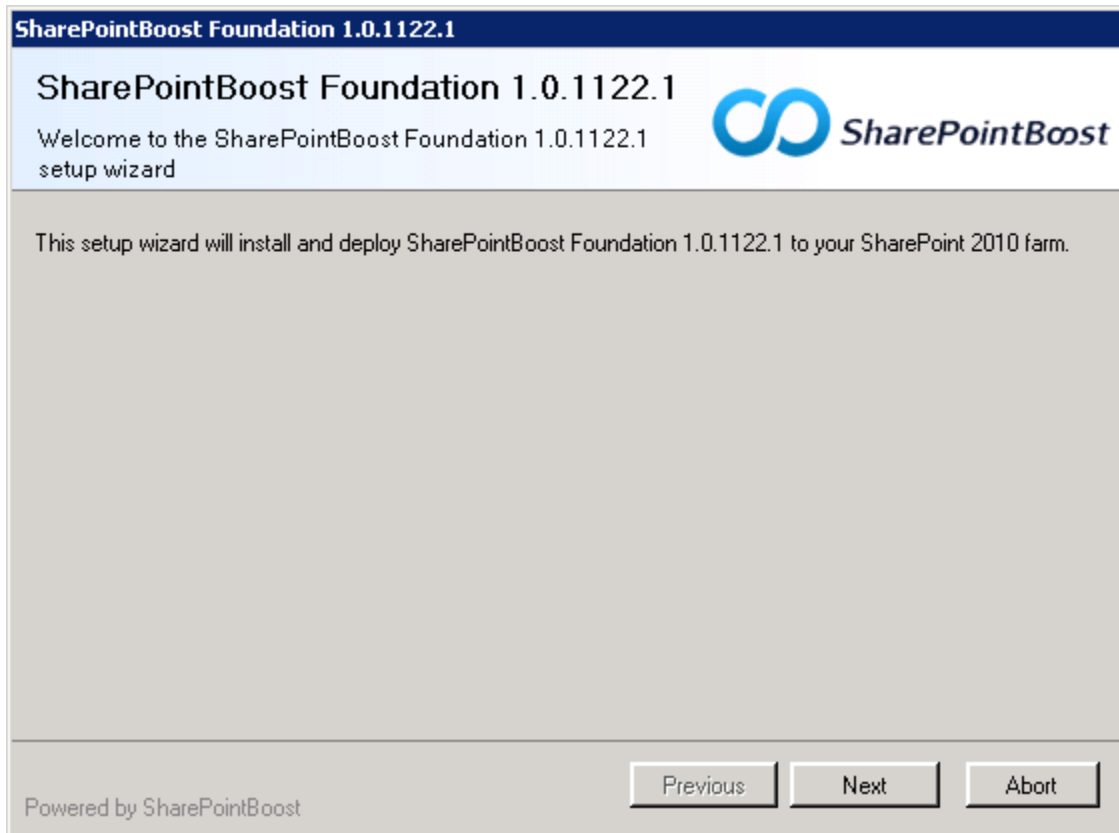
3.2 Install Prerequisites

1. To install Permission Core, the prerequisites must be installed first.

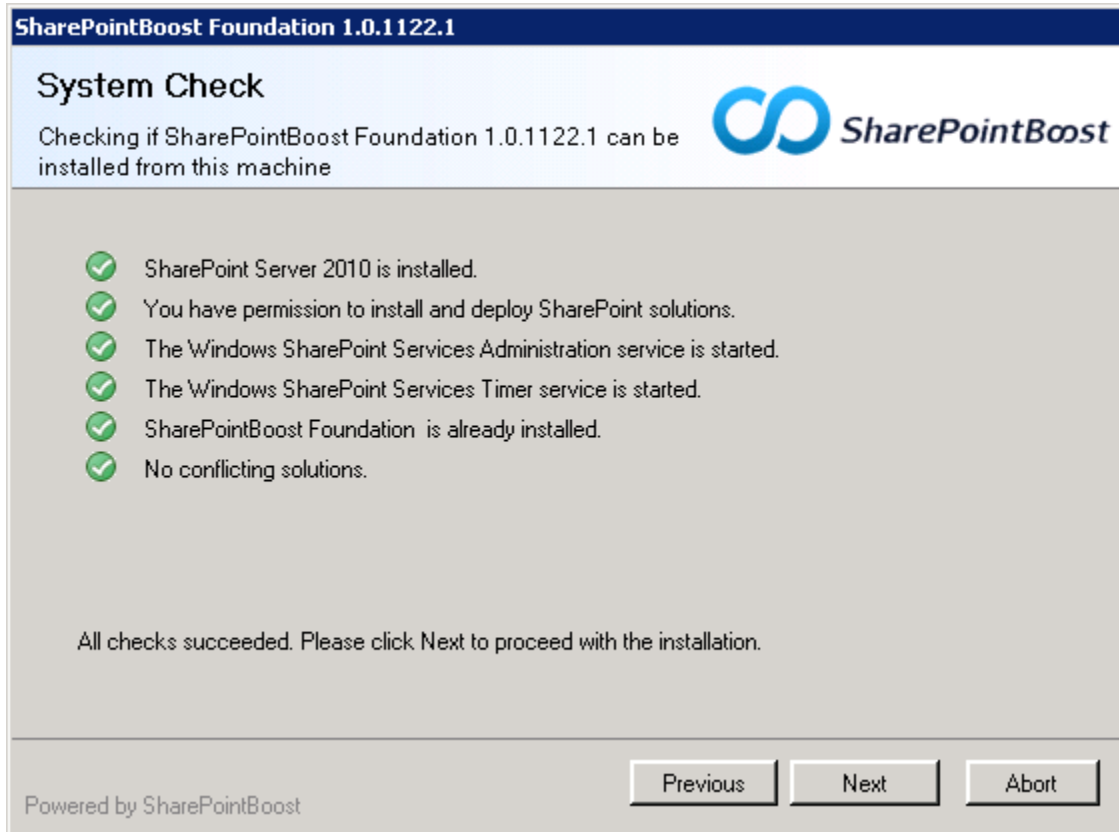
Double click Setup.exe file. Select **Prerequisites**, and click **Install**.



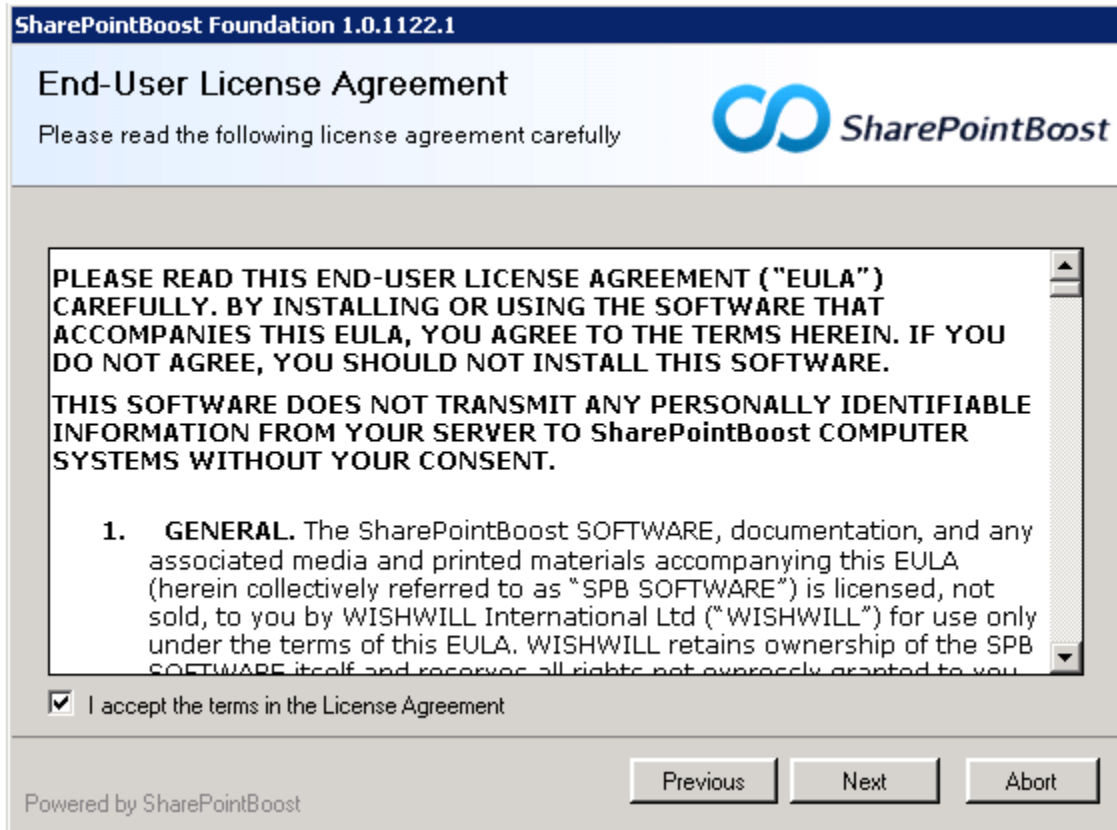
2. When the setup wizard appears, click **Next** button.



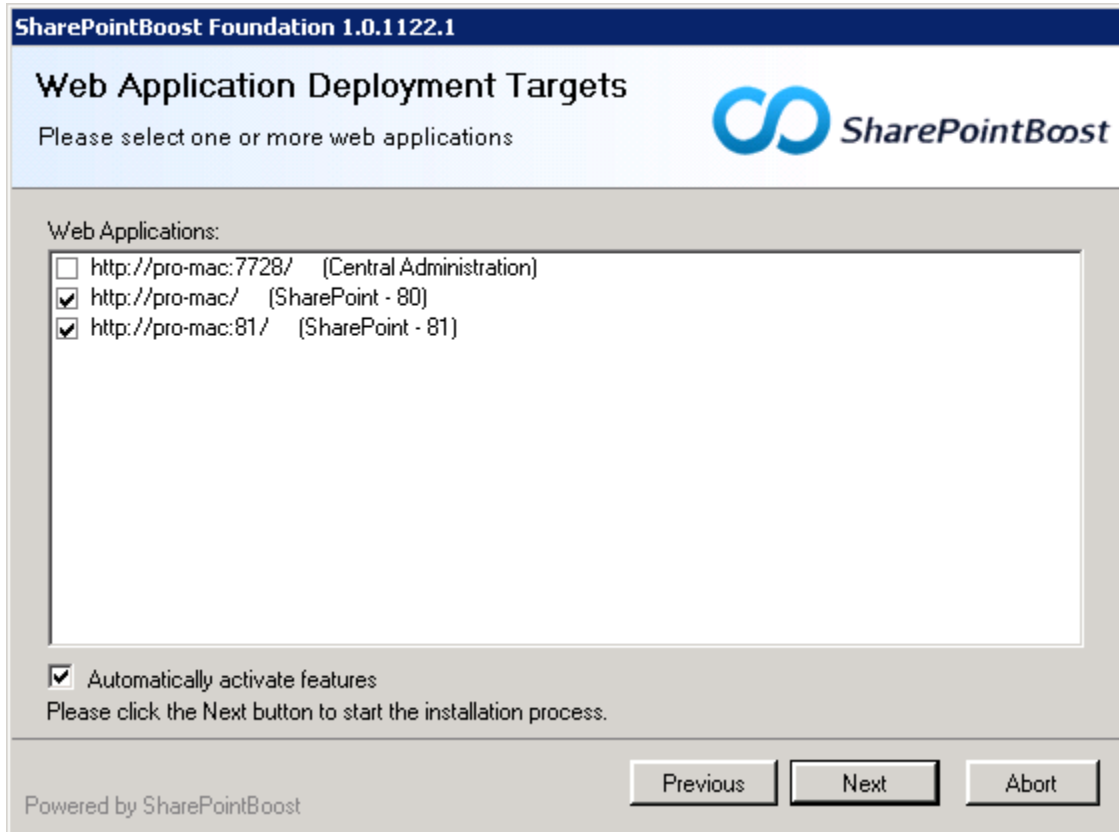
2. Wait the system check complete, and then click **Next**.



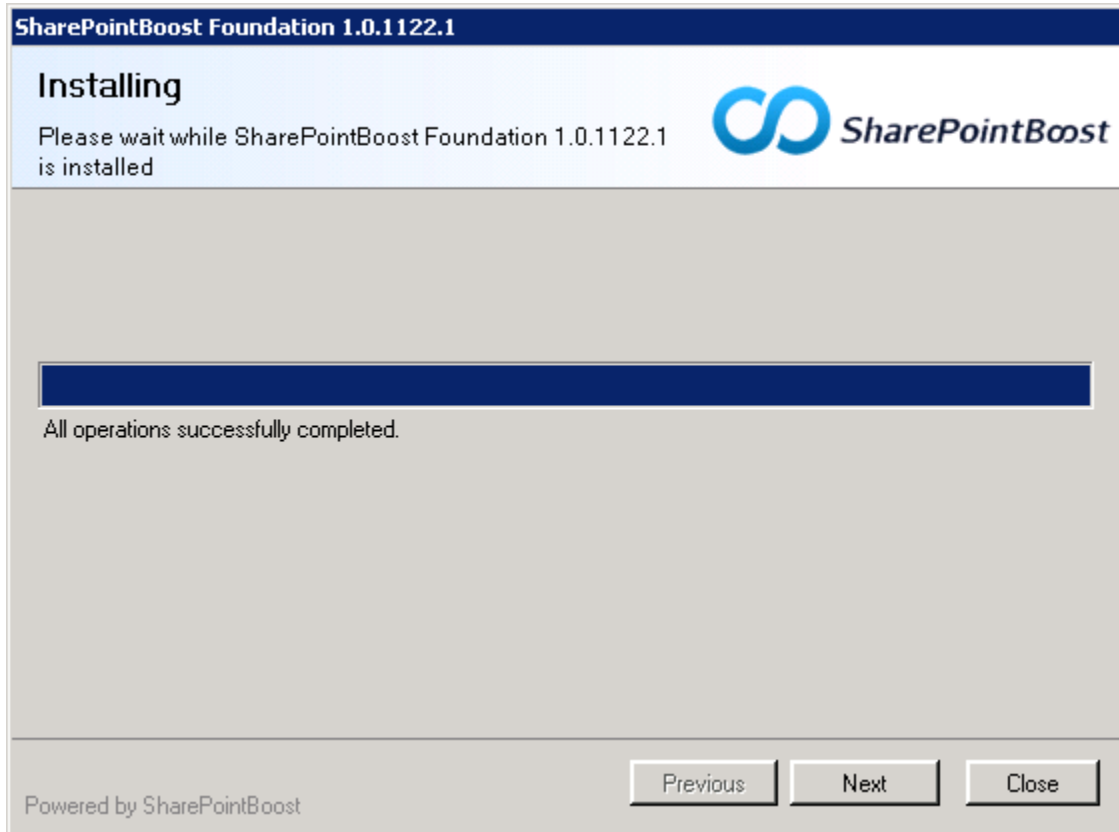
3. Select **I accept the items in the License Agreement**, and then click **Next**.



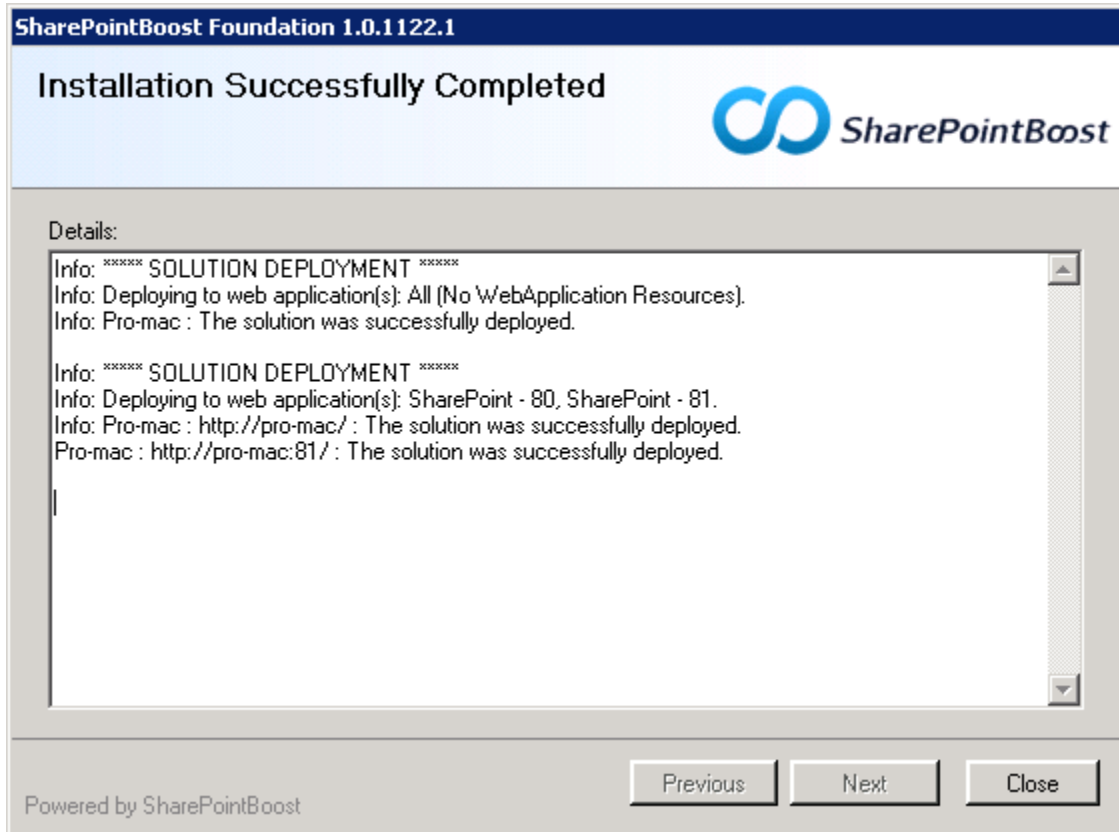
4. In **Web Application Deployment Targets**, Choose the right Web Applications you are going to install on. Then click **Next**.



5. Wait installation complete, and click **Next** to continue.

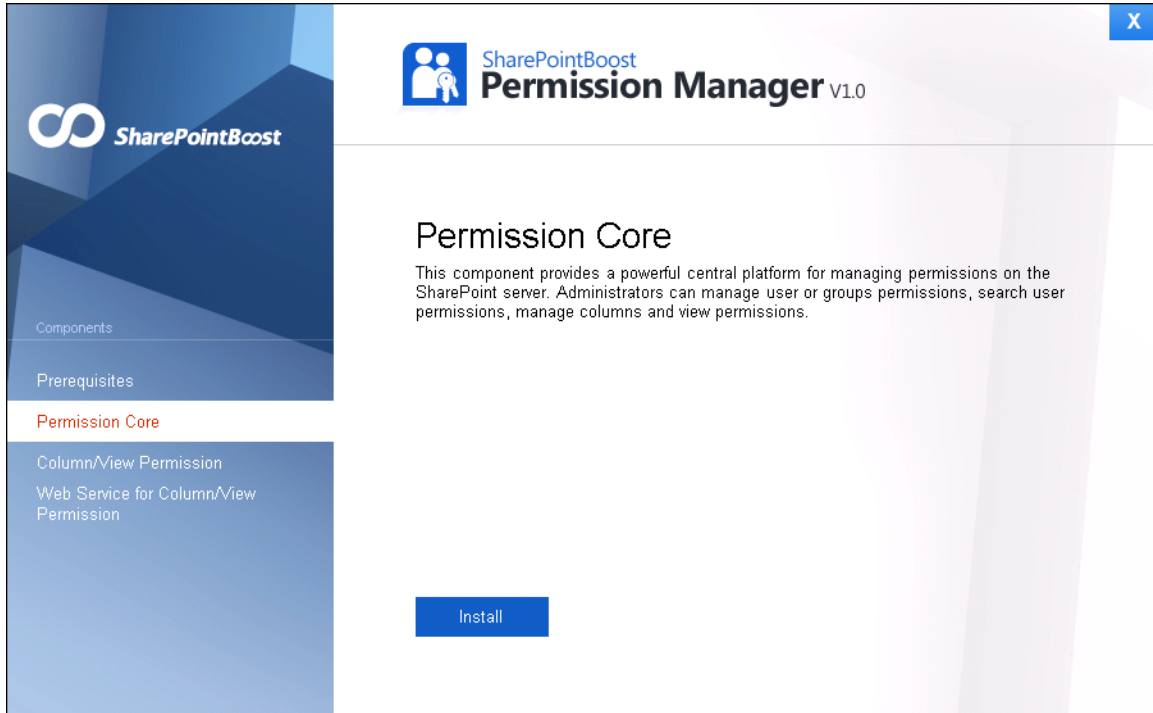


6. After checking the details, click **Close** to finish the installation.



3.3 Install Permission Core

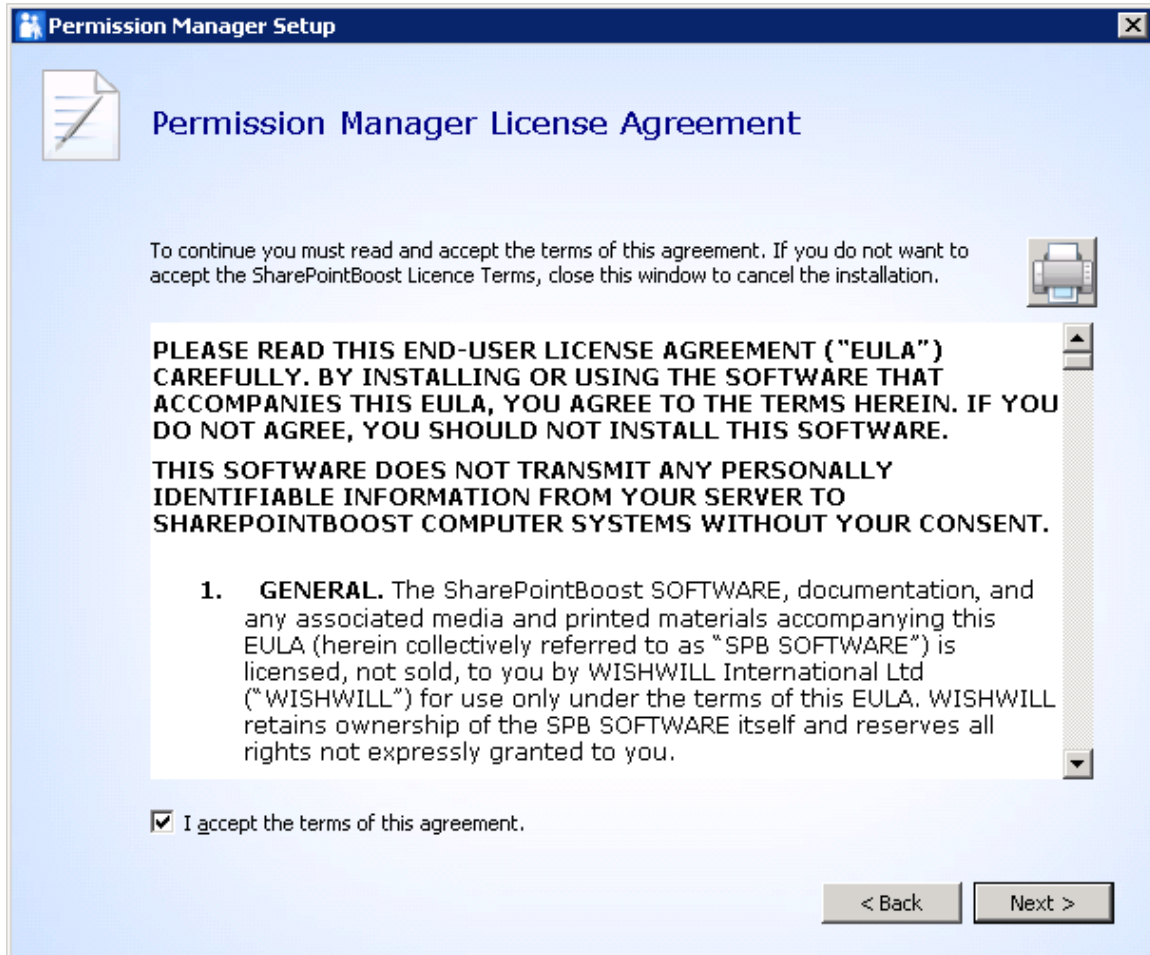
1. After installing the prerequisites, select **Permission Core**, and click **Install**.



2. In the wizard window, click **Next**.



2. Select **I accept the items of this agreement**, and then click **Next**.



3. In Web Application Configuration window, configure the **IIS Web Site Settings** and **Application Pool Settings**.

In **IIS Web Site Settings** section, type the Site Name and Port.

By default, the port is 8787. If the port exists, type another one. And then Permission Manager will create a new web application based on the port.

In **Application Pool Settings** section, the domain and user name is entered by default, you just need to type password.

Click **Next**.

The screenshot shows a Windows-style window titled "Permission Manager Setup". The main heading is "Permission Manager Web Application Configuration". Below the heading, a paragraph states: "Permission Manager installs as a SharePoint web application. Specify the IIS web site settings and application pool account." There are two main sections: "IIS Web Site Settings" and "Application Pool Settings".

IIS Web Site Settings

- Site Name:
- Port:

Application Pool Settings

- Domain:
- User Name:
- Password:

NOTE: This specified account will be used to login the Permission Manager

At the bottom right, there are two buttons: "< Back" and "Next >".

4. In Database Configuration window, configure the **Database Settings** and **Authentication**.

In **Database Settings** section, type the Sever Name, Port and Database Name.

Server Name: Type the database server name.

Note: For default instance, please type the database server name;

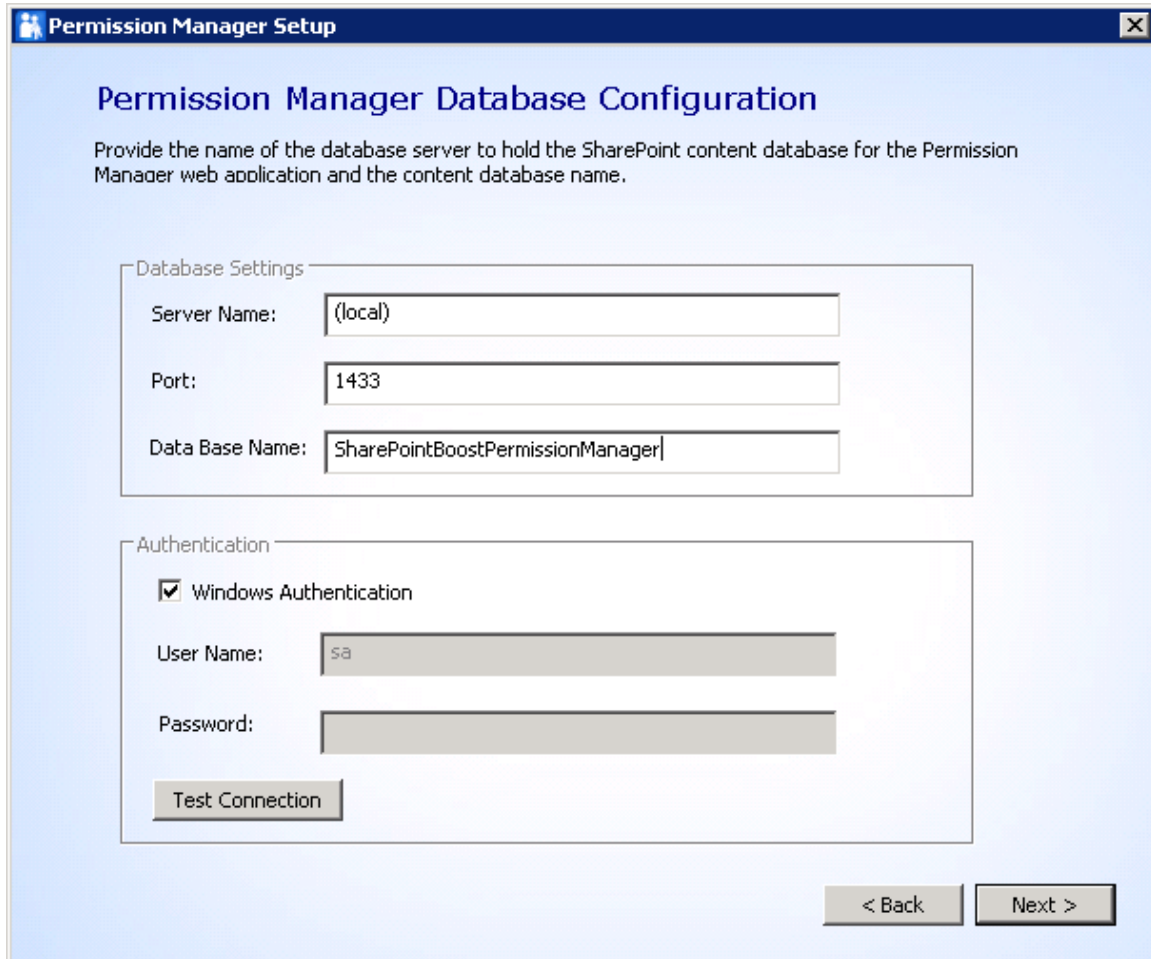
If you connect to non-default instance, please type the name as following: *database server\instance name*.

Port: By default, the port is 1433. If your SQL Server port is changed, please type the correct one.

Database Name: Type in any name (for example SharePointBoostPermissionManager). Then Permission Manager configuration data will be saved there.

Specify the authentication, then click **Test Connection** to check if connection success.

Click **Next**.



The screenshot shows a window titled "Permission Manager Setup" with a close button in the top right corner. The main heading is "Permission Manager Database Configuration". Below the heading is a paragraph: "Provide the name of the database server to hold the SharePoint content database for the Permission Manager web application and the content database name." There are two main sections: "Database Settings" and "Authentication".

Database Settings:

- Server Name: (local)
- Port: 1433
- Data Base Name: SharePointBoostPermissionManager

Authentication:

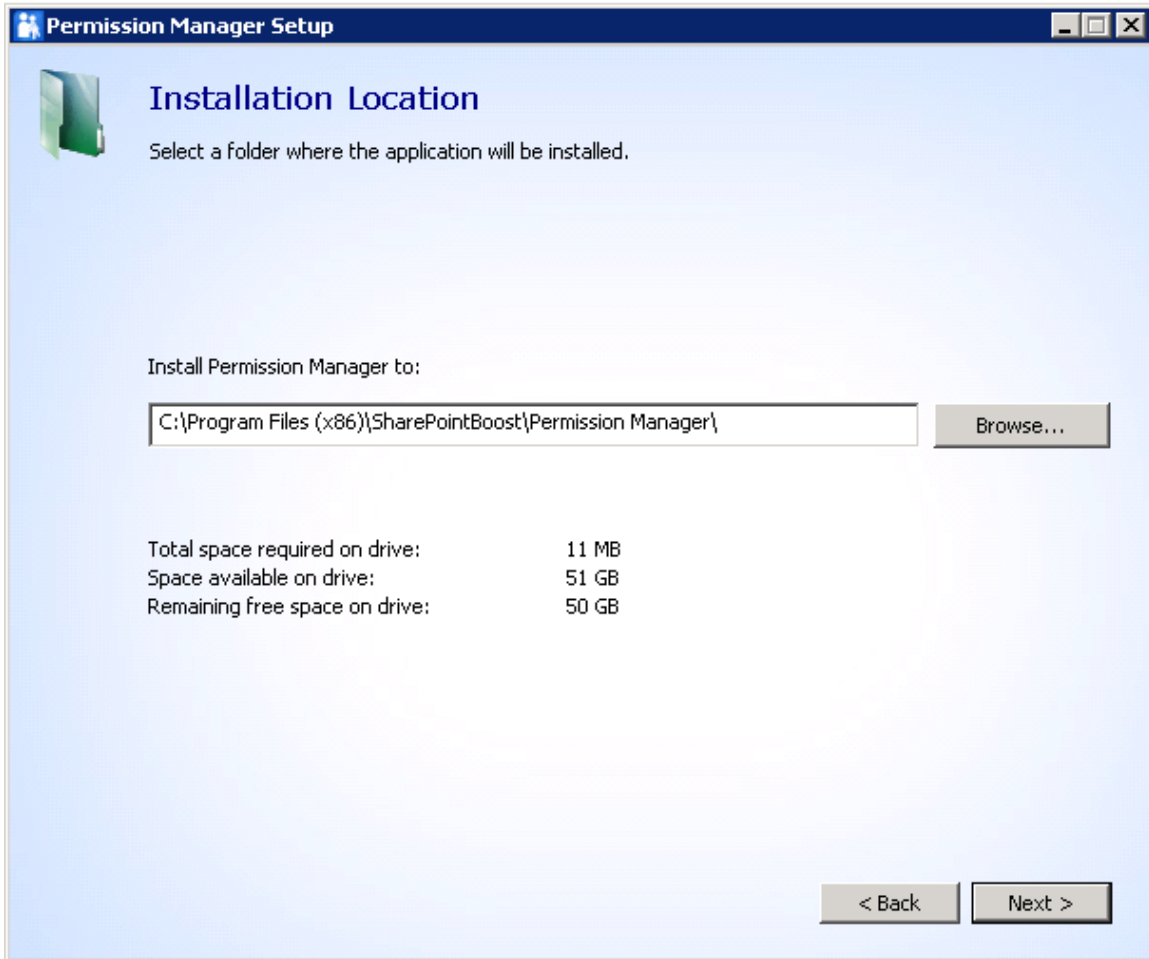
- Windows Authentication
- User Name: sa
- Password: [Redacted]
- Test Connection button

At the bottom right, there are two buttons: "< Back" and "Next >".

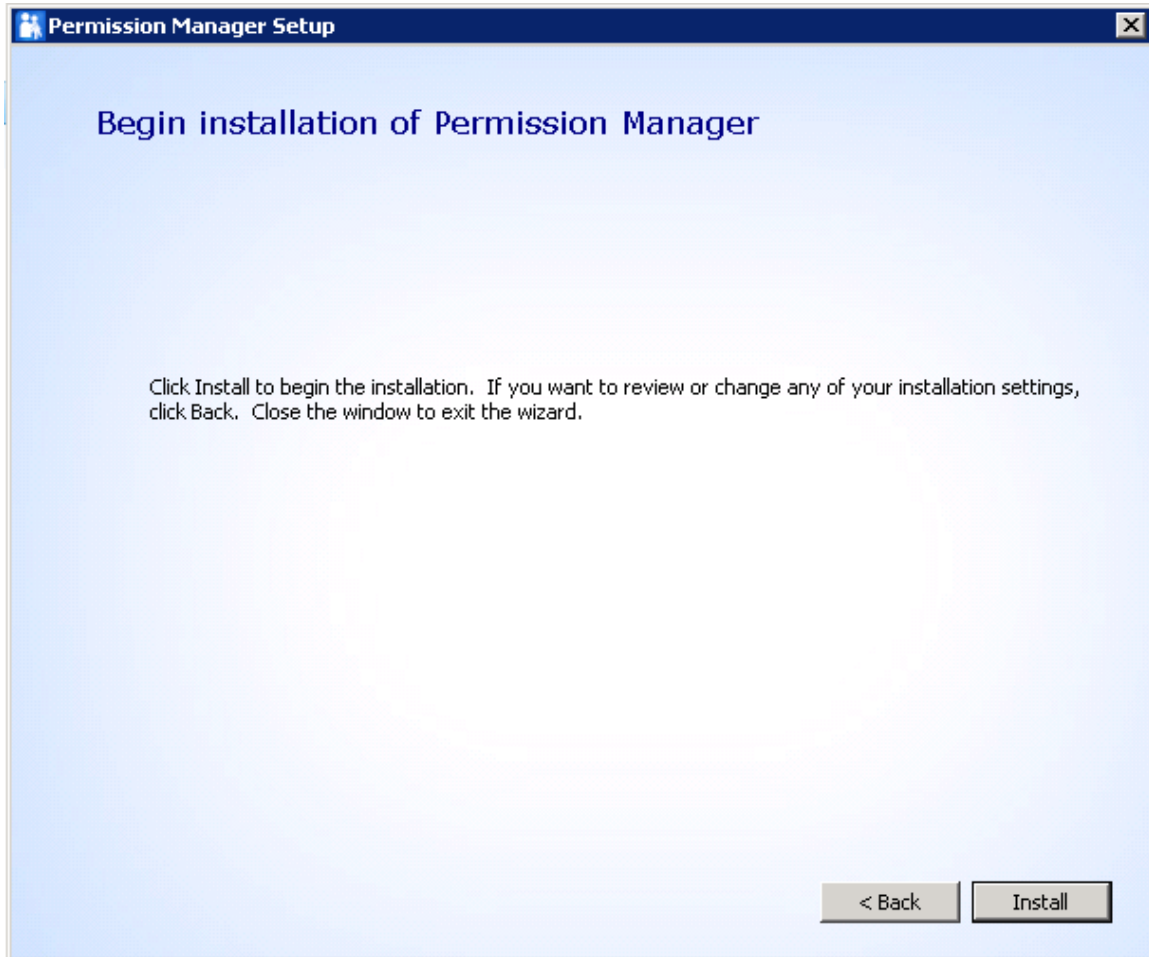
5. Choose a directory for the installation. The default path is *C:\Program Files(x86)\SharePointBoost\Permission Manager*.

You can select a different location by clicking **Browse**.

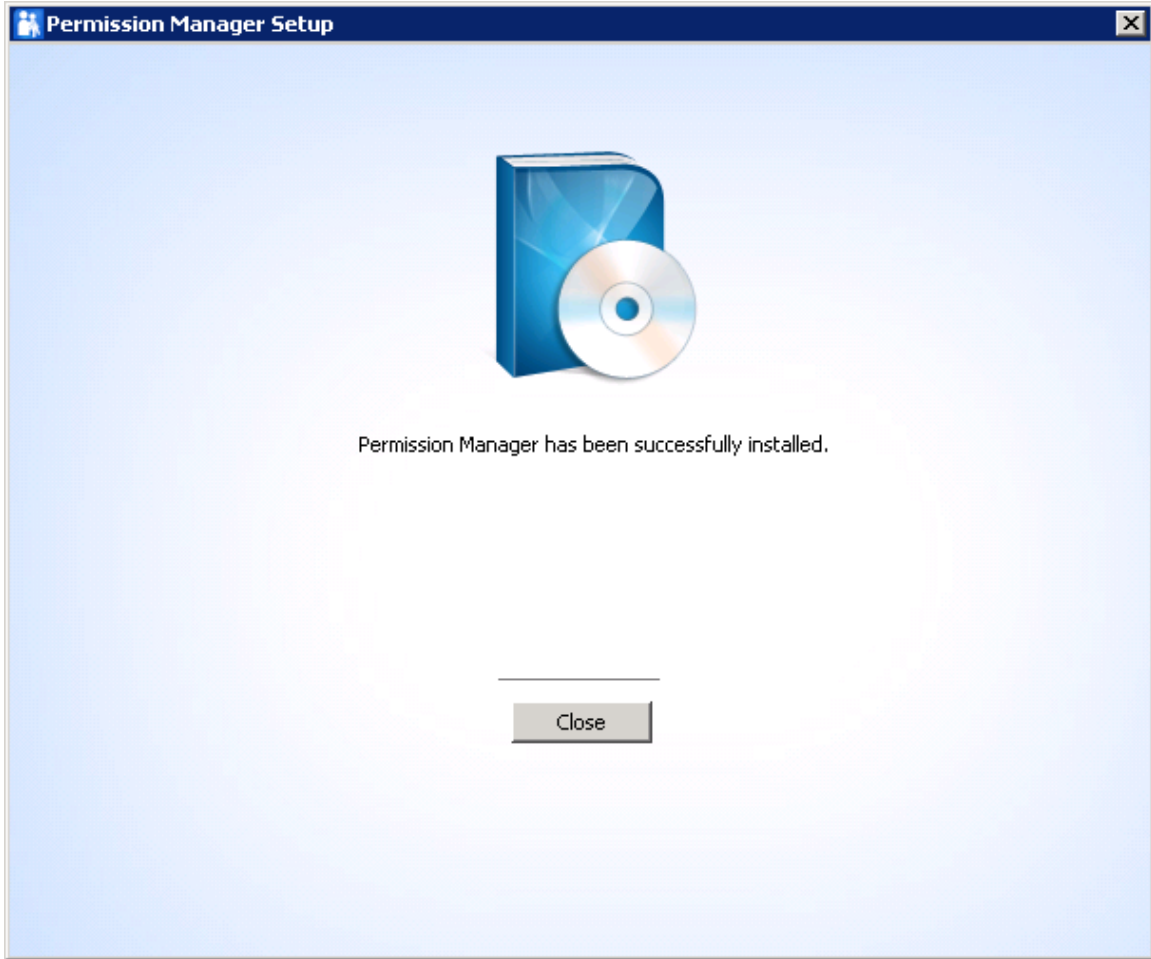
Click **Next**.



6. Confirm the installation, and click **Install**.

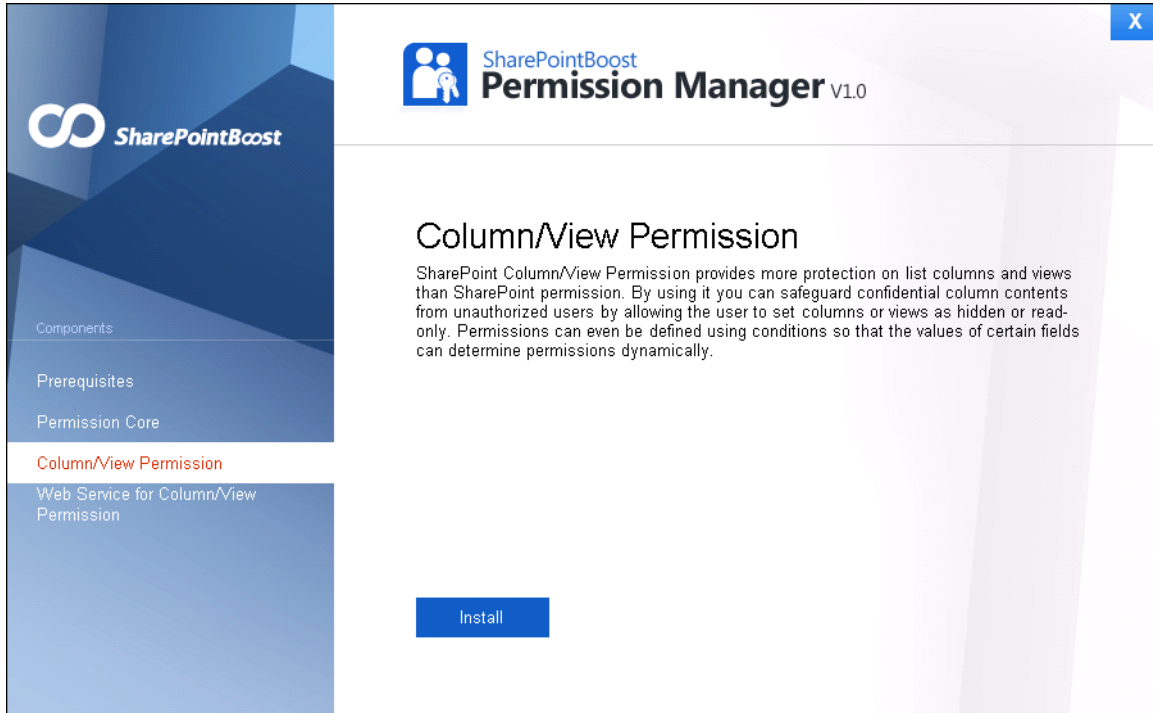


6. Wait installation complete, and click **Close**.

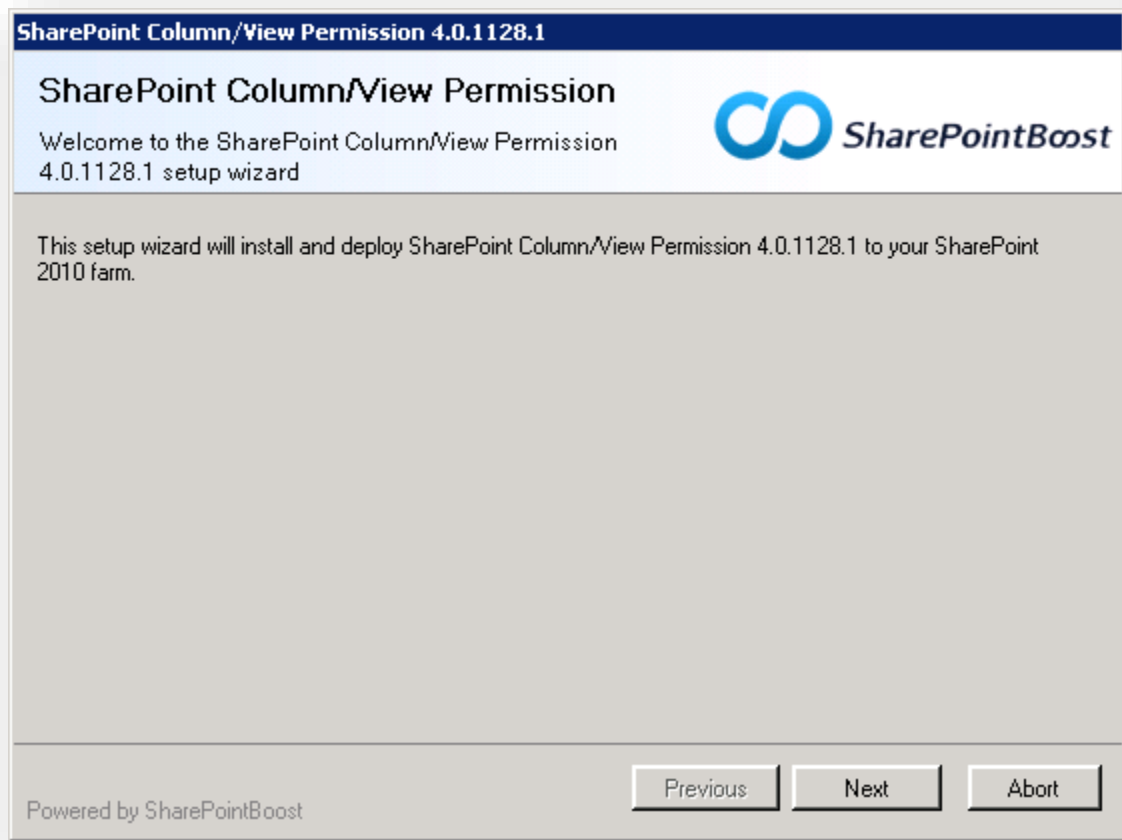


3.4 Install Column/View Permission

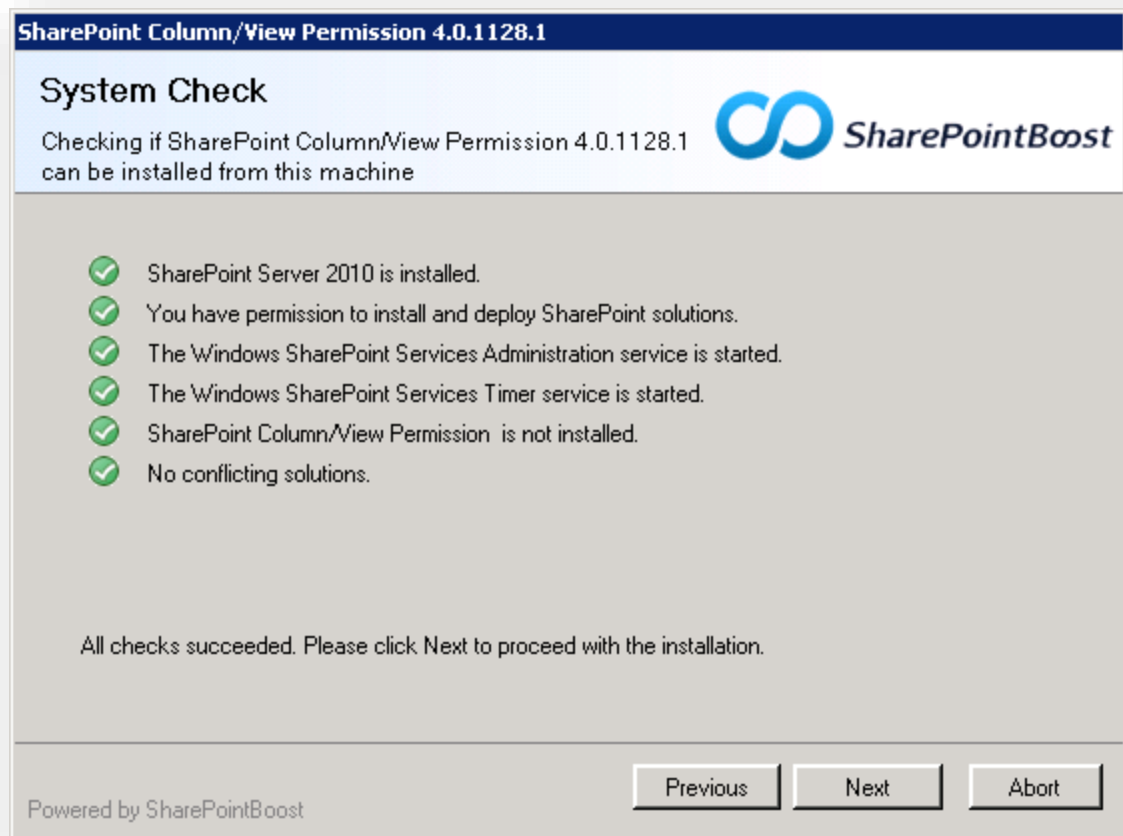
1. In Permission Manager install wizard, select **Column/View Permission** and click **Install**.



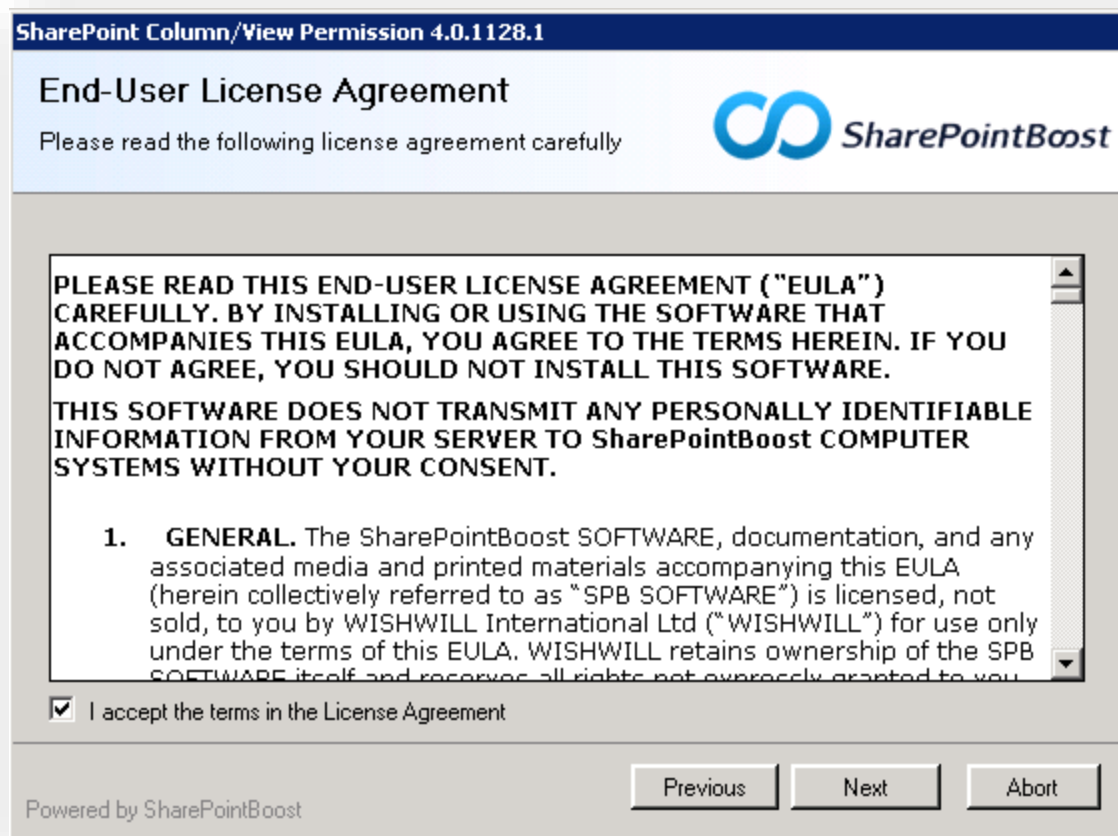
2. The setup wizard appears, click **Next** button.



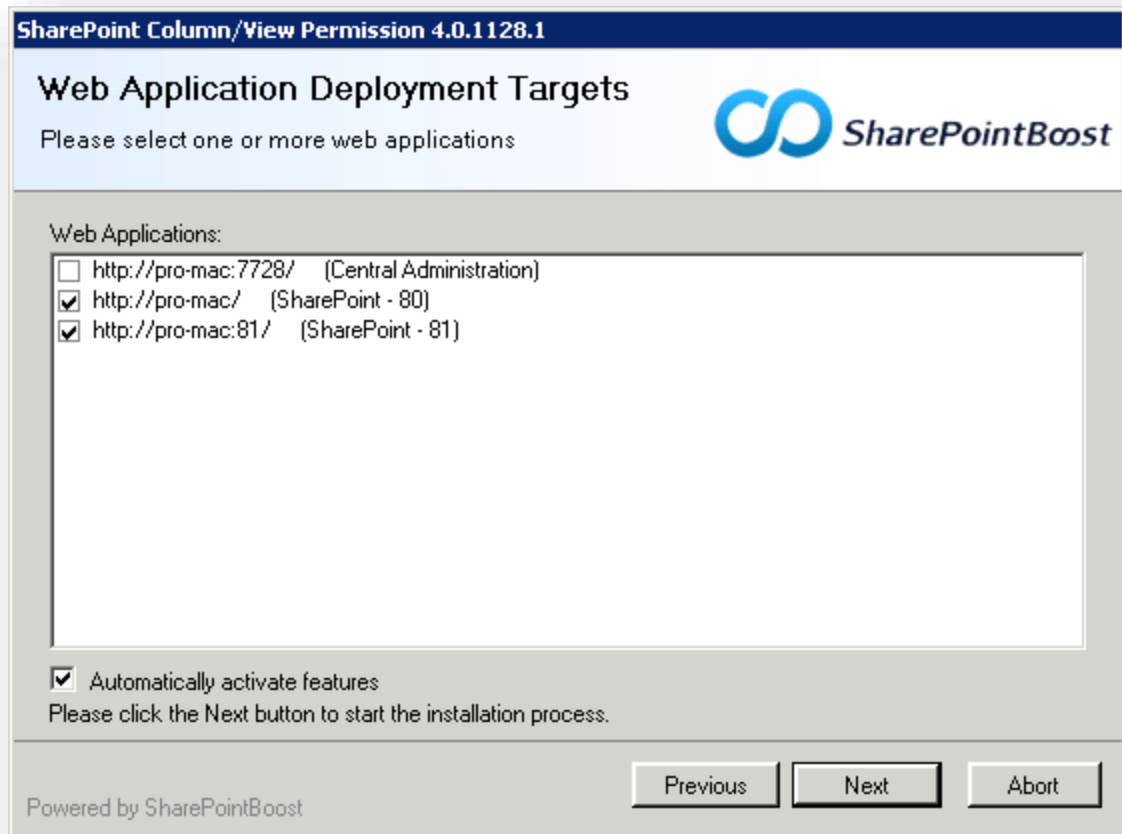
3. Wait the system check complete, and then click **Next**.



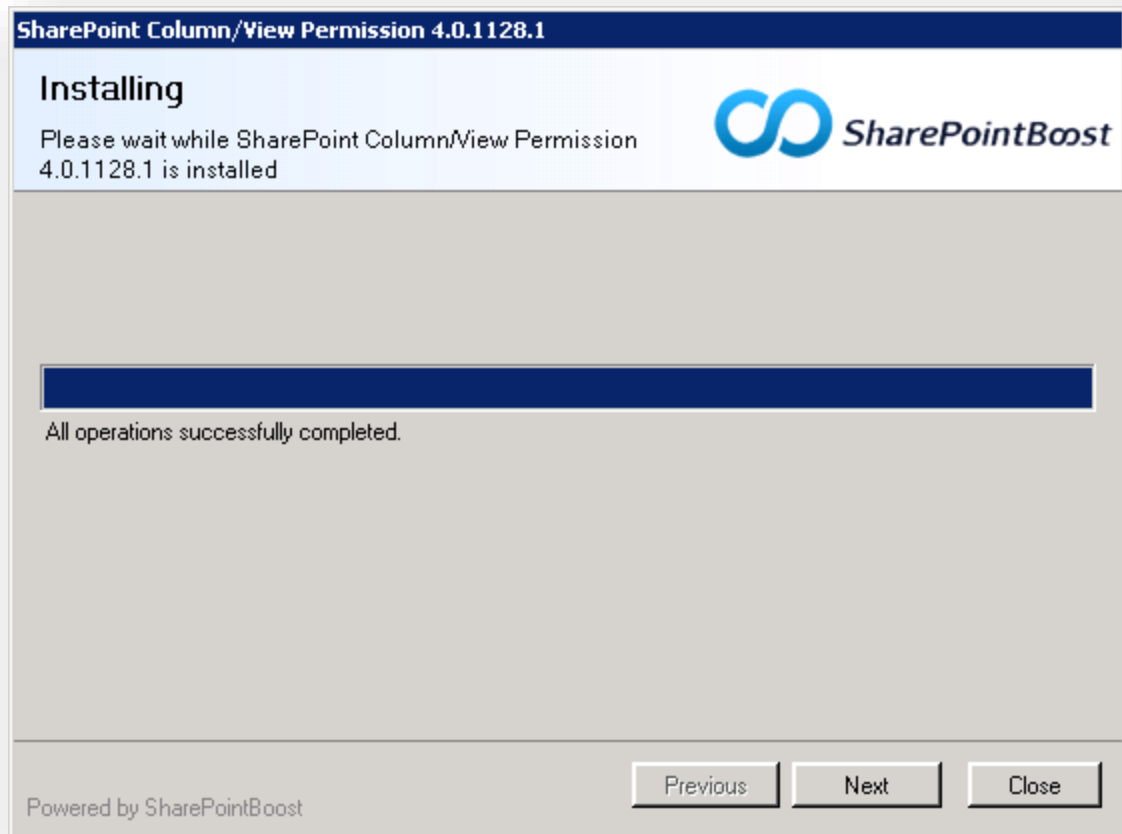
4. Select **I accept the items in the License Agreement**, and then click **Next**.



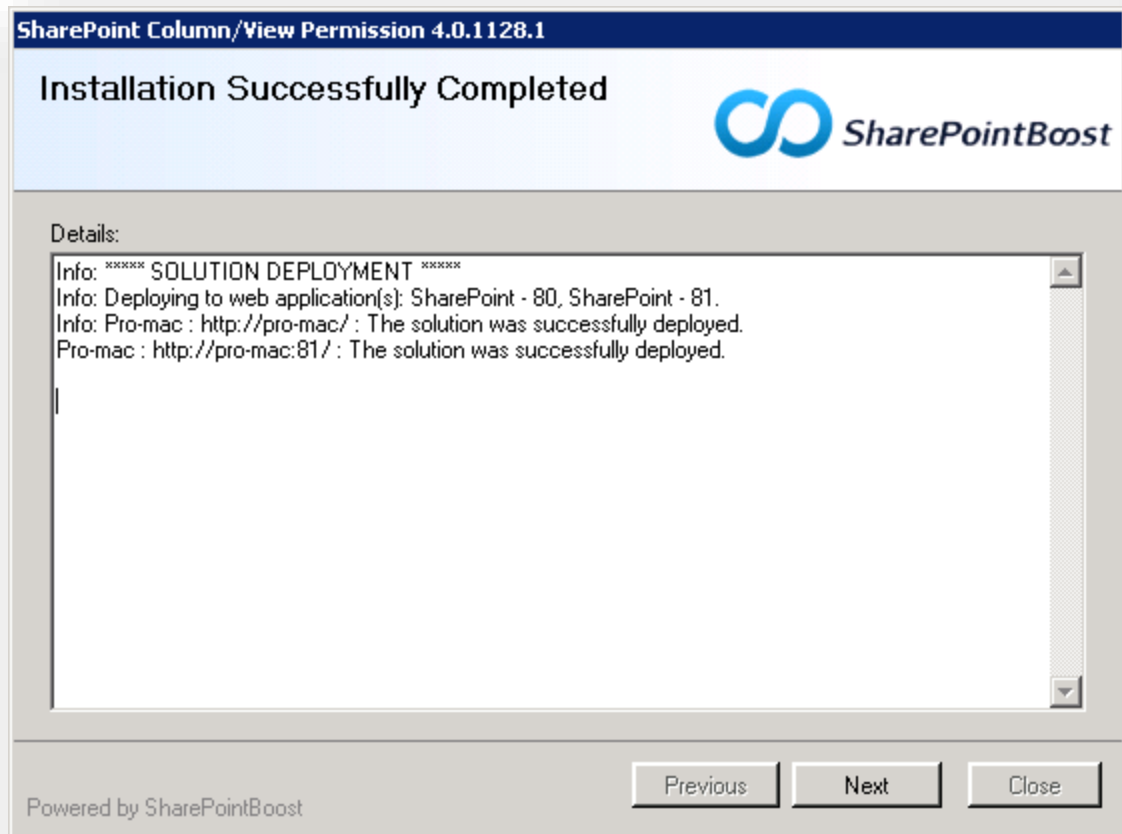
5. In **Web Application Deployment Targets**, Choose the right Web Applications you are going to install on. Then click **Next**.



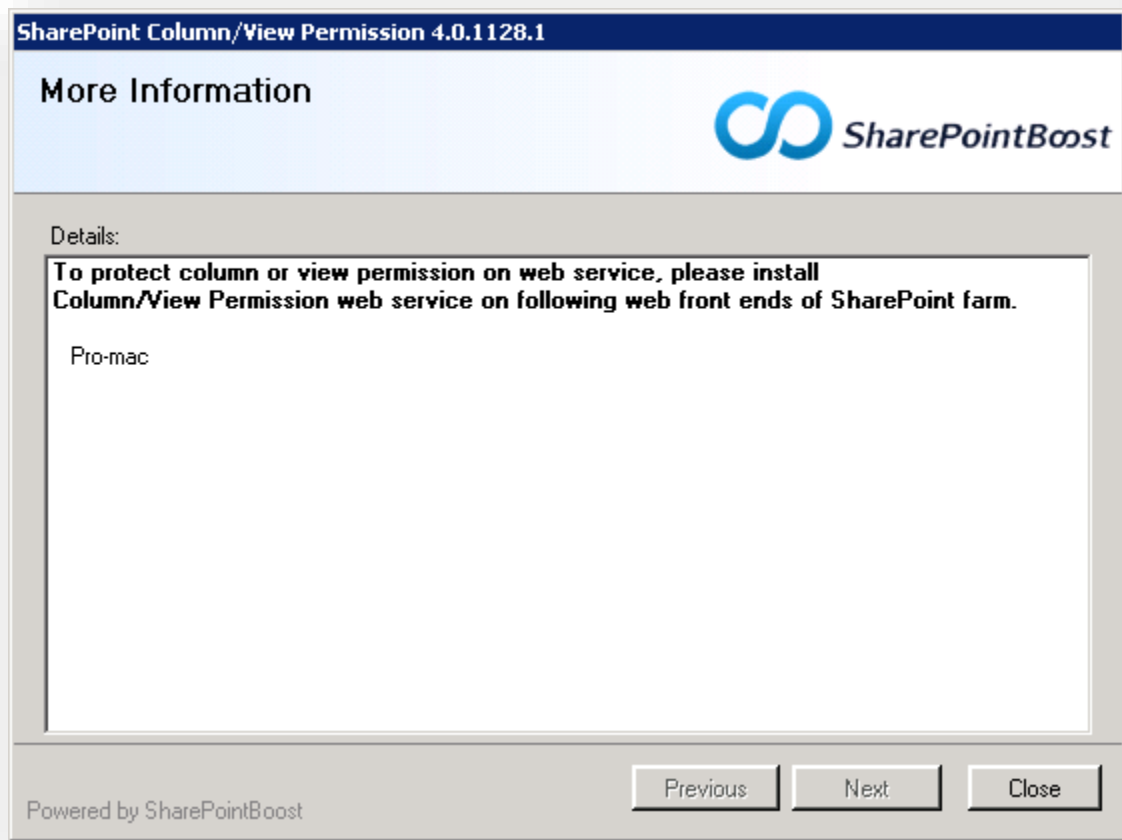
6. Wait installation complete, and click **Next** to continue.



6. Then, you can see the installation details. And click **Next**.

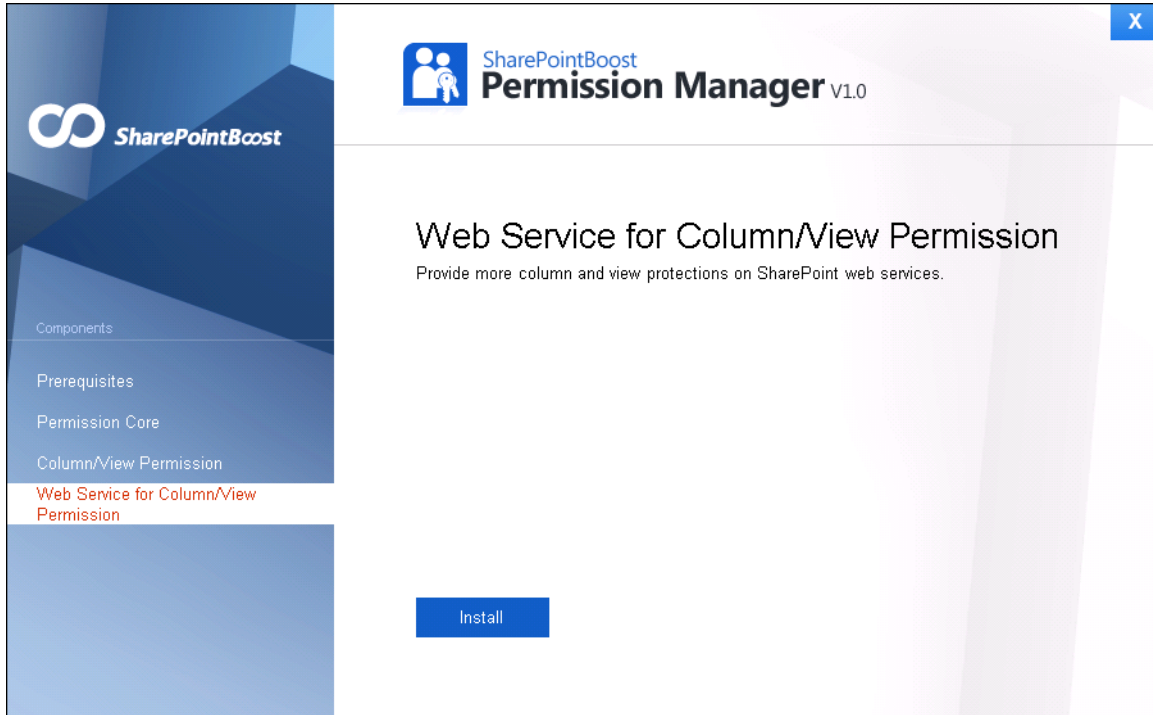


7. In More Information, you will be informed to install **Column View Permission for Web Service** on each web front end.

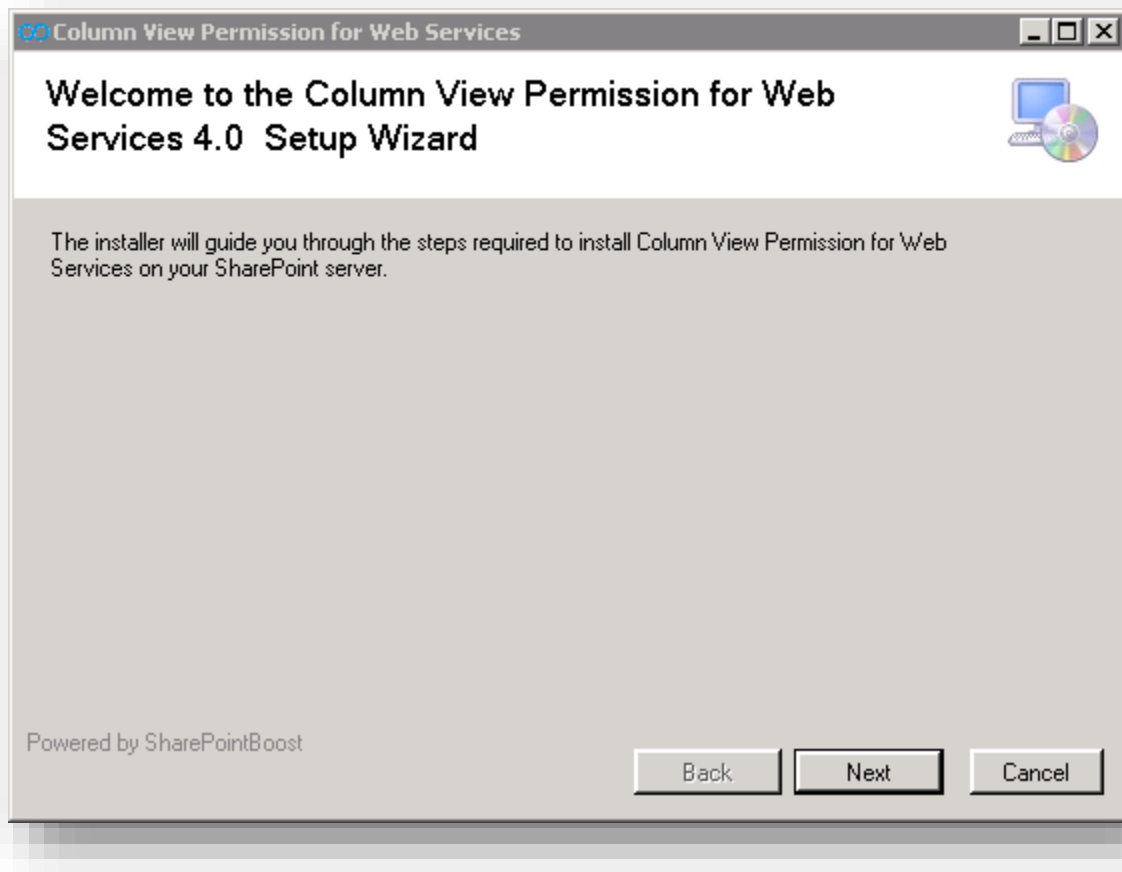


3.5 Install Column View Permission for Web Service

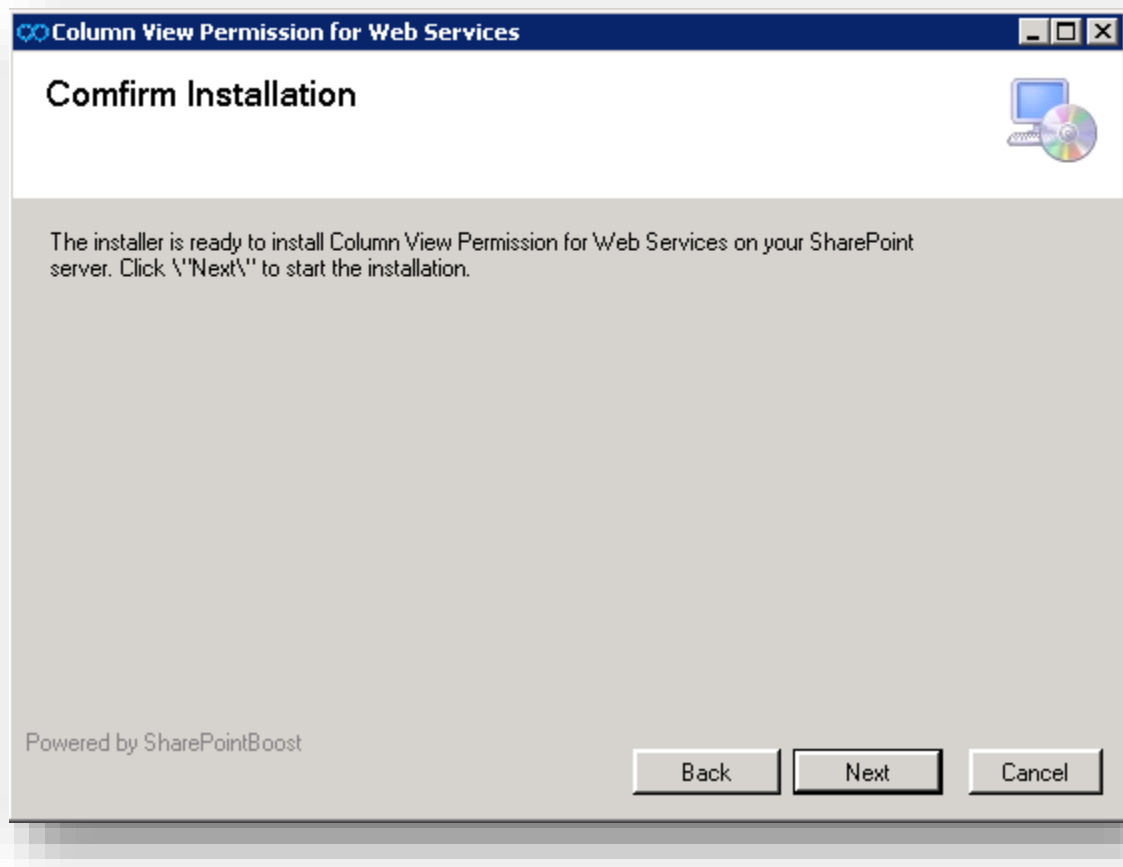
1. In Permission Manager install wizard, select **Column View Permission for Web Service** and click **Install**.



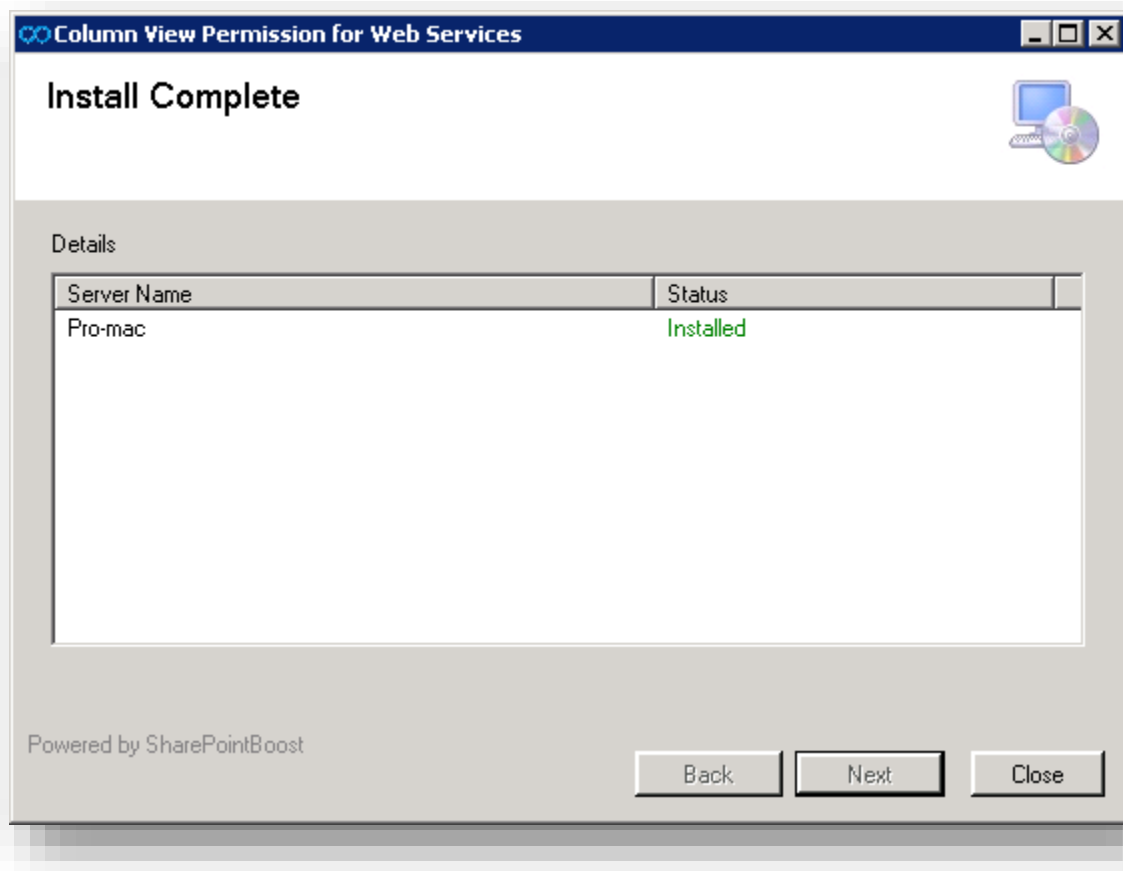
2. The setup wizard appears, click **Next** button.



2. After confirming to install Column View Permission for Web Service in the wizard, click **Next**.



3. Upon completion of the installation, details are displayed showing on which web front end the Column/View Permission for Web Service has been installed.



4. Then, repeat above steps to install Column View Permission for Web Service on each web front end in the SharePoint farm.

4. Access Permission Manager

1. After installation, open a browser and enter: <http://<machine>:8787>

Where <machine> is the host name or IP address of the machine running SharePoint services. If the default port number has been changed from 8787, enter the new port number.

2. Then, enter username (domain\user) and password, click Sign In.

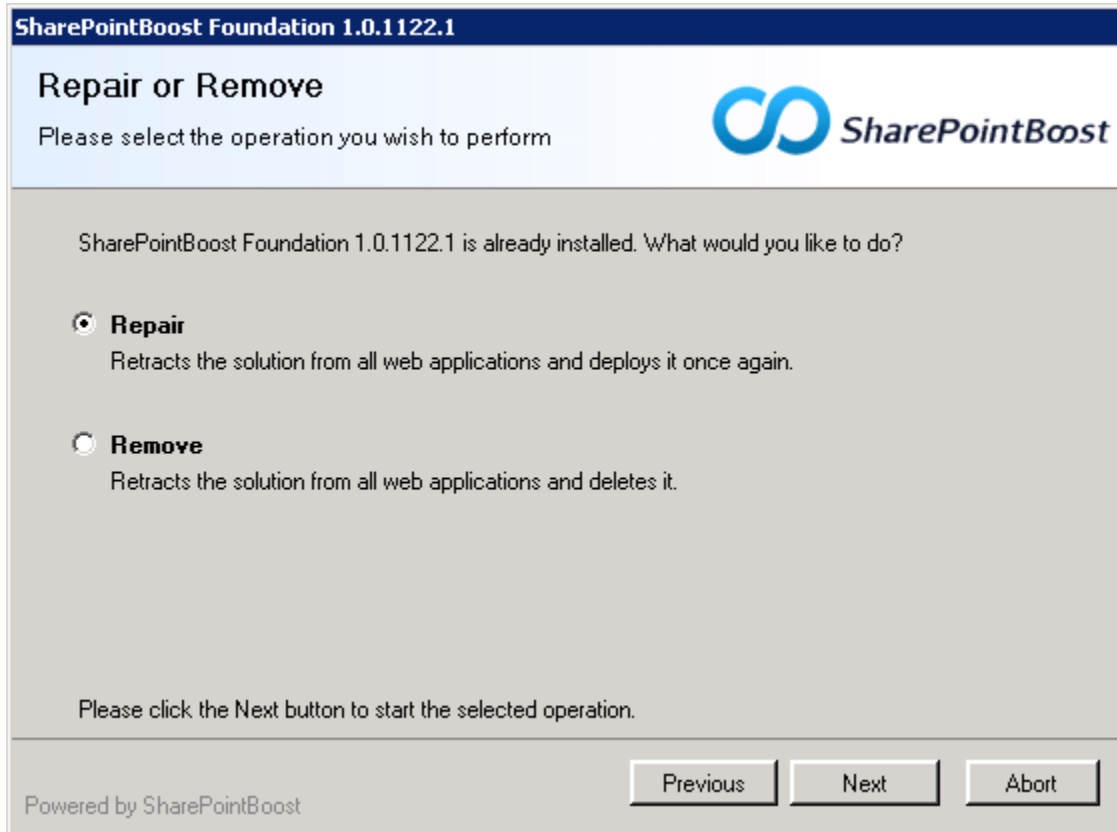
5. Repair Instructions

5.1 Repair Prerequisites

To repair the prerequisites, double click Setup.exe file. Select **Prerequisites**, and click **Install**.

If the setup file has been deleted, please download it from <http://www.sharepointboost.com>

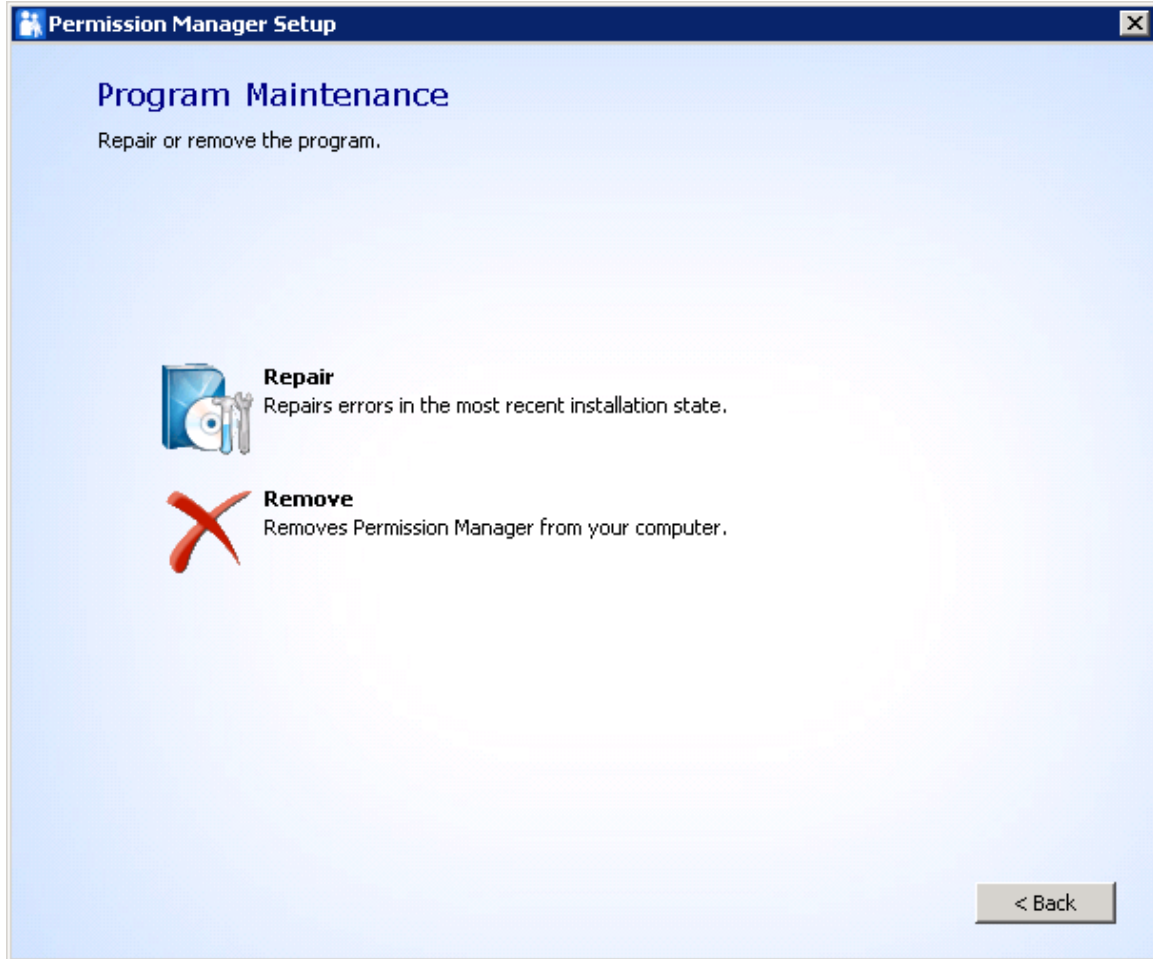
In the Repair or Remove window, select **Repair**, and click **Next**.



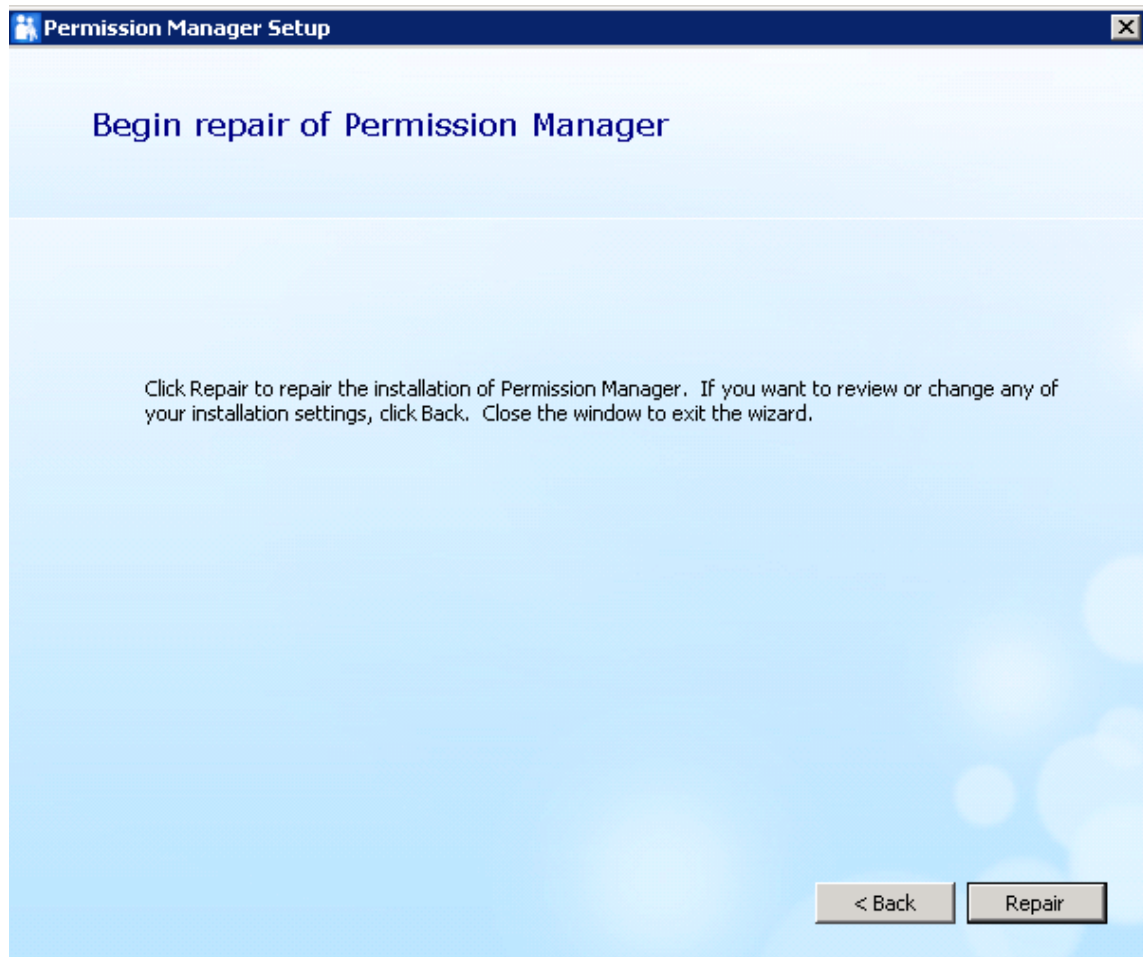
5.2 Repair Permission Core

If you want to repair Permission Core, double click Setup.exe file. Select **Permission Core**, and click **Install**.

In the Program Maintenance window, select **Repair**.



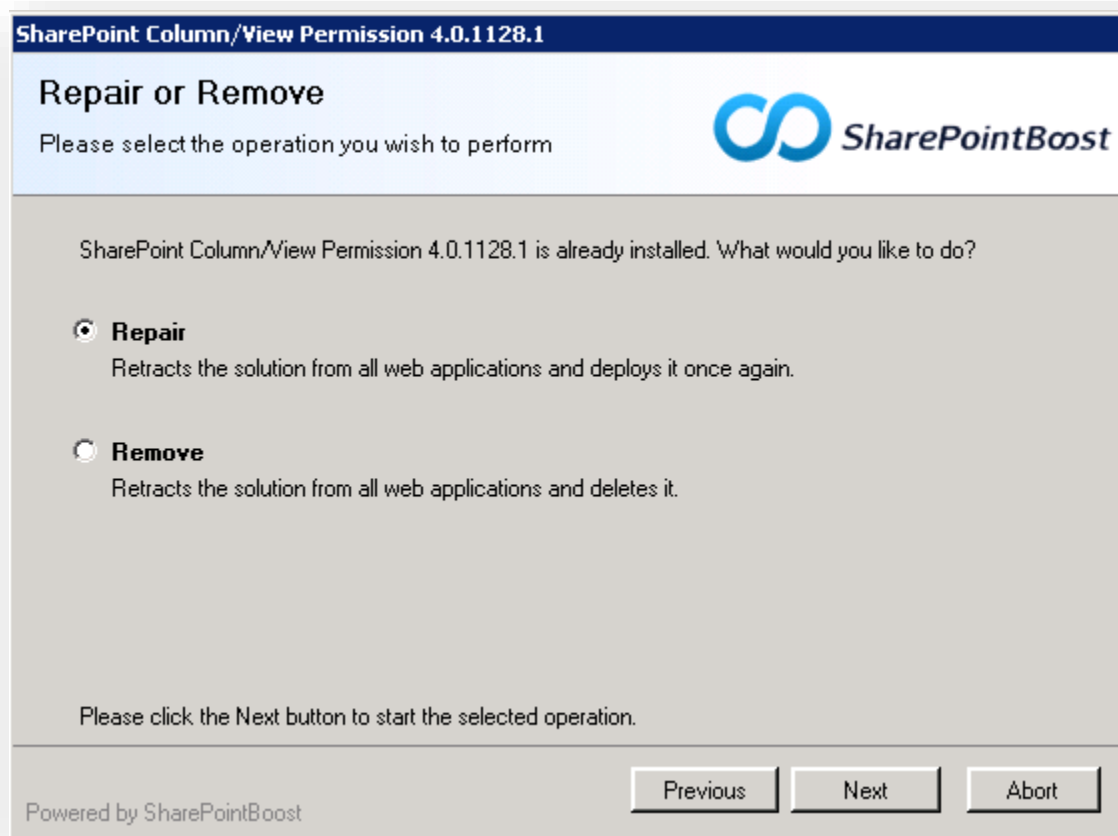
Then, in the Begin repair of Permission Manager window, click **Repair** button.



5.3 Repair Column/View Permission

To repair Column/View Permission, double click Setup.exe file. Select **Column/View Permission**, and click **Install**.

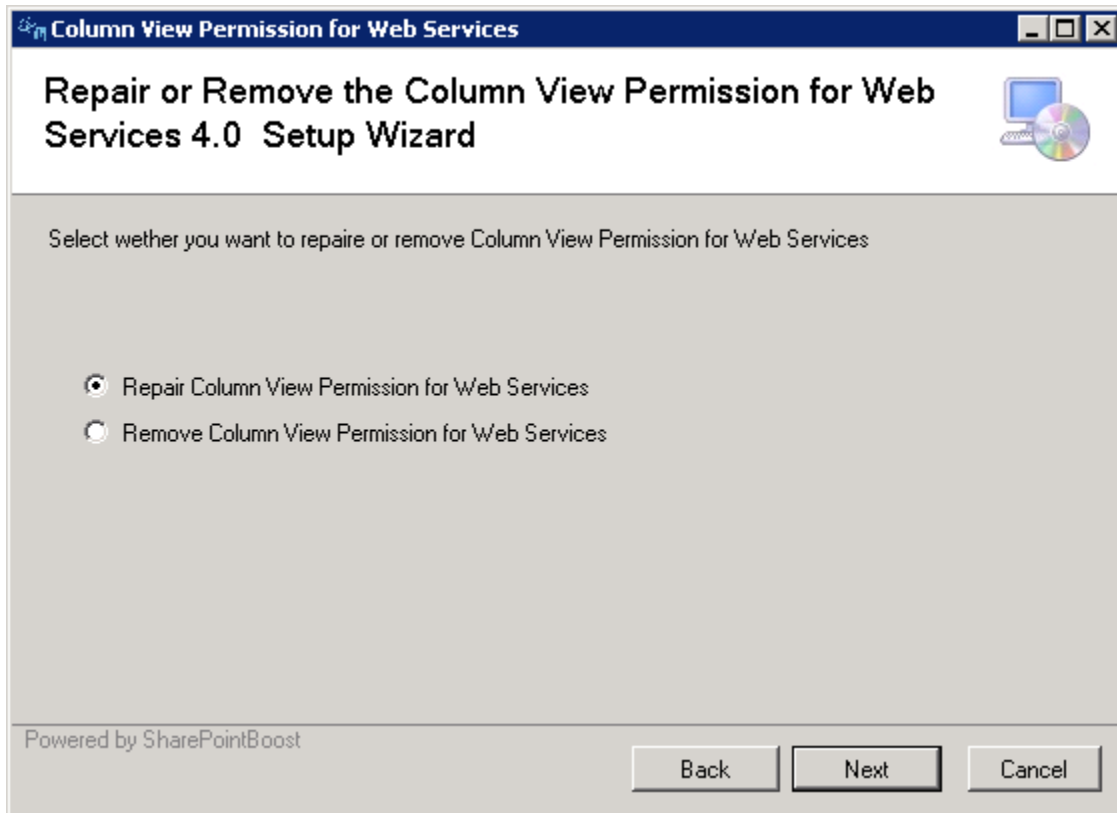
In the Repair or Remove window, select **Repair**, and click **Next**.



5.4 Repair Column/View Permission for Web Service

To repair Column/View Permission for Web Services, double click Setup.exe file. Select **Column/View Permission for Web Services**, and click **Install**.

In the Repair or Remove window, select **Repair**, and click **Next**.



6. Uninstallation Instructions

Permission Manager contains four components: Prerequisites, Permission Core, Column/View Permission and Column/View Permission for Web Services.

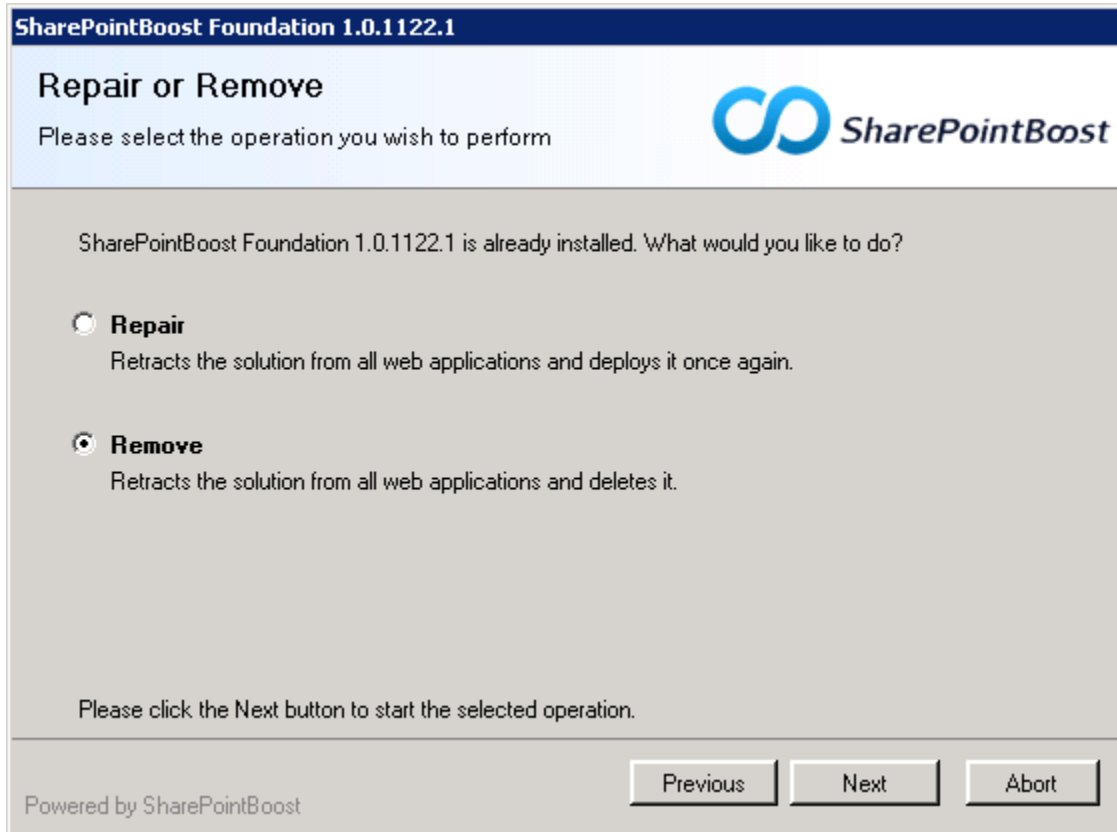
To uninstall the product completely, you need to uninstall all above four components.

6.1 Uninstall Prerequisites

If you want to uninstall the product, double-click the Setup.exe file. (If the setup file has been deleted, please download it from <http://www.sharepointboost.com>)

In the Repair or Remove window, select **Remove**, and click **Next**.

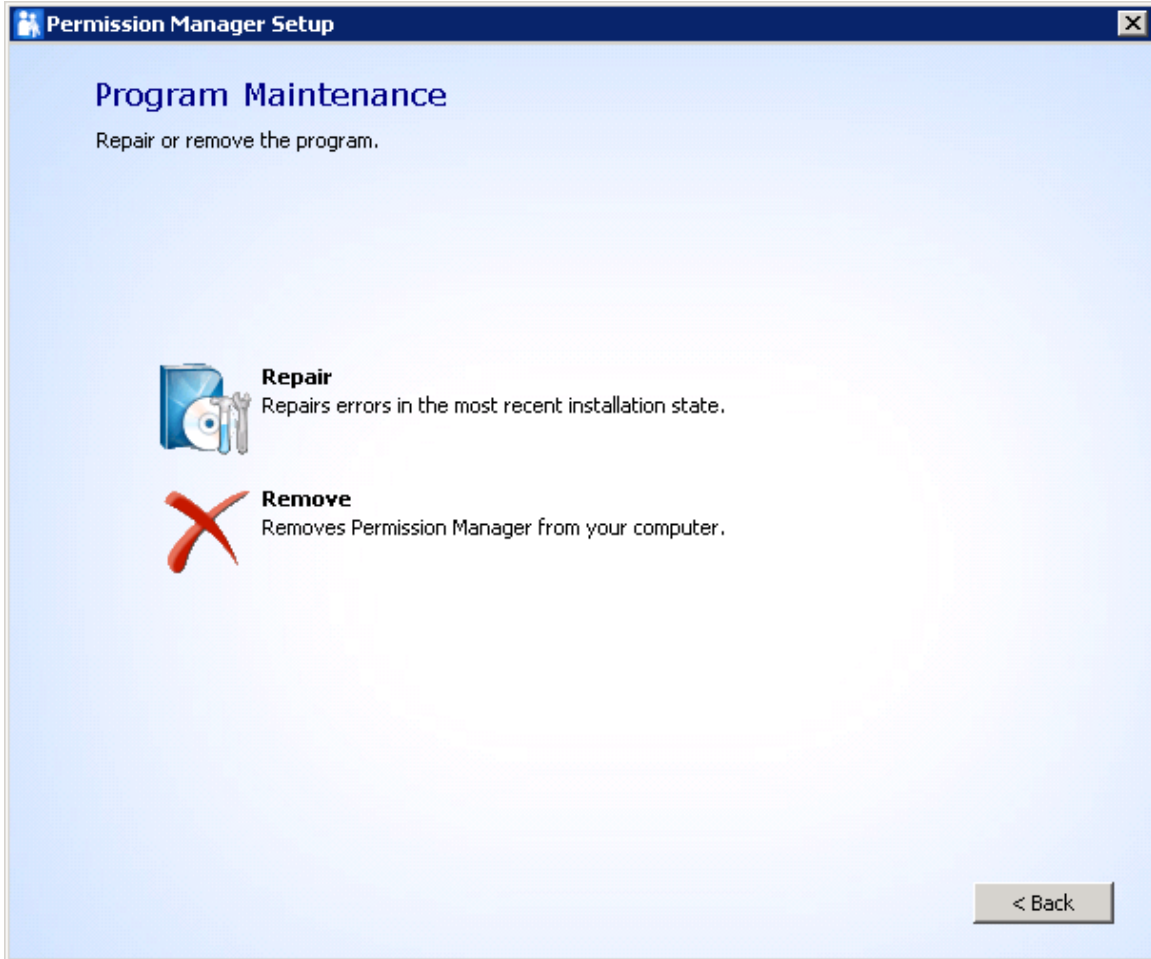
The prerequisites are removed then.



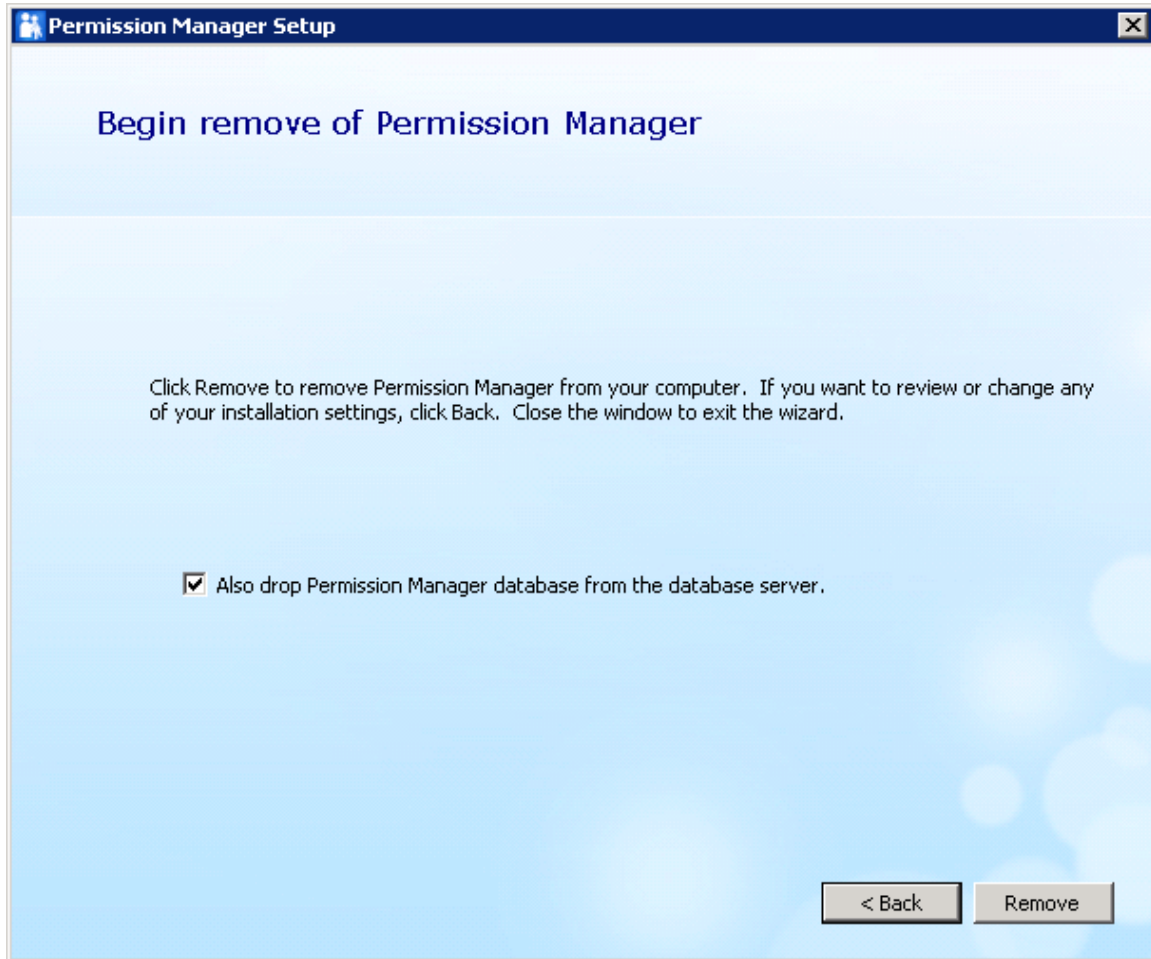
6.2 Uninstall Permission Core

To uninstall Permission Core, double click Setup.exe file. Select **Permission Core**, and click **Install**.

In the Program Maintenance window, select **Remove**.



Select if the product database deleted during uninstallation, then click **Remove** button.



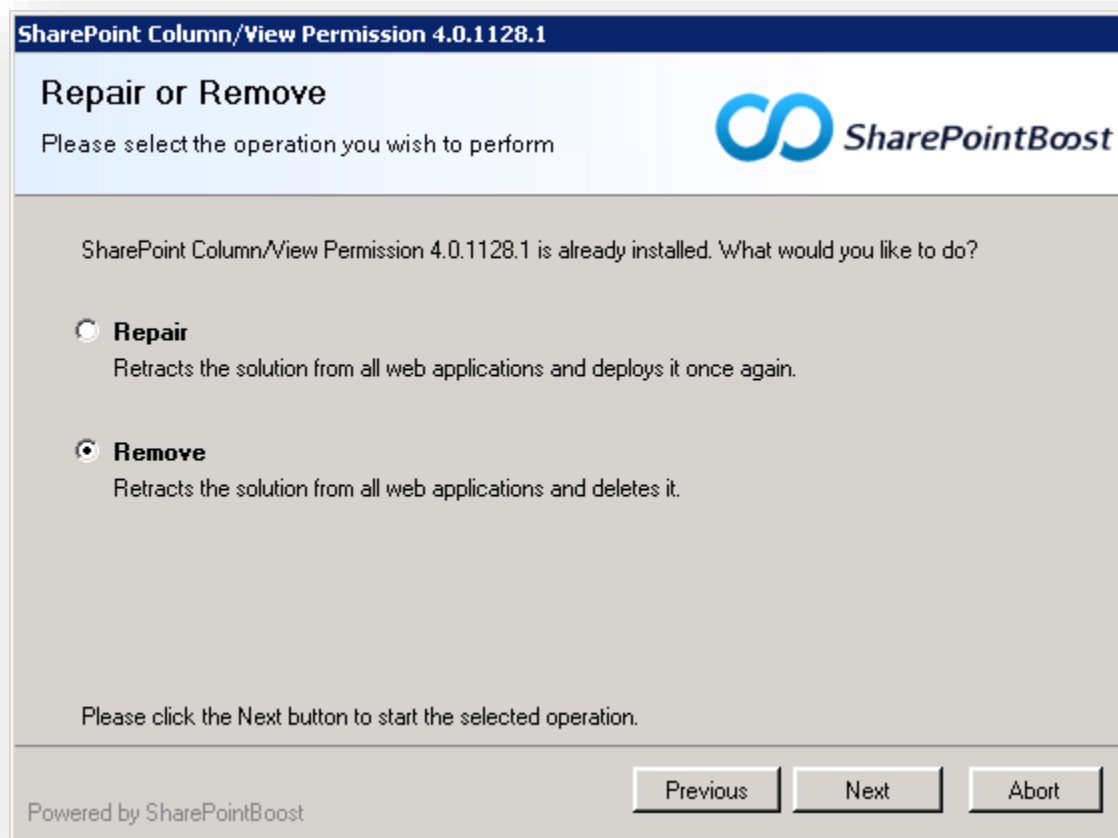
Permission Core is removed then.

6.1 Uninstall Column/View Permission

To uninstall Permission Core, double click Setup.exe file. Select **Permission Core**, and click **Install**.

In the Repair or Remove window, select **Remove**, and click **Next**.

Then Column/View Permission is removed.



6.1 Uninstall Column/View Permission for Web Service

To uninstall Column/View Permission for Web Service, double click Setup.exe file. Select **Column/View Permission for Web Service**, and click **Install**.

In the Repair or Remove window, select **Remove**, and click **Next**.

Then the component is removed.

7. Support

7.1 Troubleshooting FAQ

<http://www.sharepointboost.com/general-faq.html#Show=ChildTitle9>

7.2 Contact Info

Product & Licensing Inquires

sales@sharepointboost.com

Technical Support (Basic)

support@sharepointboost.com

Technical Support (Premium)

Please direct your email to the address sent to you in your payment confirmation, otherwise contact sales@sharepointboost.com for assistance.

Request a New Product or Feature

feature_request@sharepointboost.com

Live chat

<http://www.sharepointboost.com/support/chat/livezilla.php?intgroup=U3VwcG9ydA==&reset=true>

Please note our support team is located in Asia. Our working hours are:

New York	London	Sydney
9:00 – 12:00 (EST)	07:00 – 11:00 (GMT)	08:00 – 21:00 (AEST)
10:00 – 13:00 (EST+1, EDT)	07:00 – 12:00 (GMT+1, BST)	09:00 – 21:00 (AEST+1, AEDT)
17:00 – 21:00 (EST)	14:00 – 17:00 (GMT)	
18:00 – 21:00 (EST+1, EDT)	15:00 – 18:00 (GMT+1, BST)	